

Financial Indicator Graphs

for the Year Ended December 31, 2008



Prepared by Financial Advisory Services
Local Government Services Division

Introduction

The financial indicator graphs have been prepared by Alberta Municipal Affairs using municipal financial and statistical data. The package is intended to serve as a tool that may assist council and administration with operational decisions. The comparative measures may be useful in assessing past performance and for budget planning. Each municipality is compared to a group of similar sized urban municipalities, or to rural municipalities with similar tax base. The comparison group is shown on the last slide.

Financial Advisory Services can provide assistance in interpreting this information and can prepare custom indicator graphs upon request for other comparative groups, e.g. comparisons with only larger municipalities.

Other points to note are:

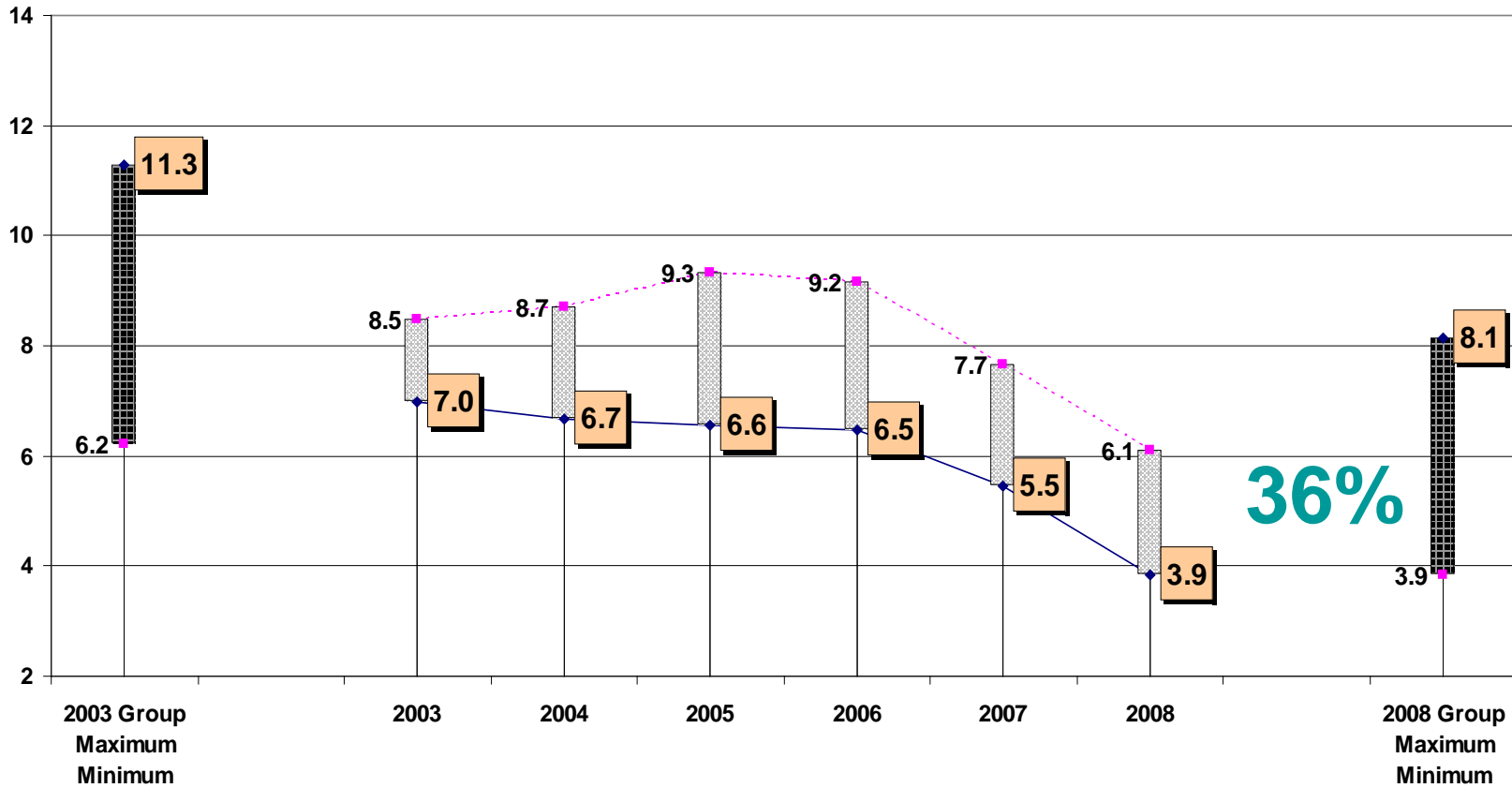
- 1. The range for most of the graphs is 2003 to 2008.**
- 2. Equalized assessment is shown for the period 2004 to 2009.**
- 3. Caution should be used when interpreting results as each municipality has unique characteristics affecting how it compares to the group. In addition, circumstances may have changed since the December 31, 2008 reporting date.**

Financial Indicator Graphs included:

- Equalized Tax Rates – Net Municipal/Residential/Non-Residential
- Equalized Assessment Per Capita (urban only)
- Equalized Assessment Per Km of Roads (rural only)
- Non-residential Equalized Assessment as % of Total
- Tax Collection Rate
- Debt & Debt Service as % of the Limits
- Long Term Municipal Debt Per Capita
- Municipal Debt Servicing as % of Total Revenue
- Major Revenue Sources Per Capita/as % of Total Operating Revenue :
 - Net Municipal Property Tax
 - Sales & User Charges
 - Provincial and Federal Grants
- Per Capita Operating Expenditures by Broad Function Category:
 - Total
 - General Government
 - Protective Services
 - Transportation
 - Environmental Protection
 - Recreation
- Roads Operating Expenditures Per Km (rural only)
- Per Capita Expenditures by Major Type:
 - Salaries, Wages & Benefits
 - Contracted & General Services
 - Materials, Goods, Supplies & Utilities
 - Bank Charges & Interest
- Long Term Liquidity/Long Term Liquidity Per Capita
- Reserves/Reserves Per Capita
- Ratio of Current Assets to Current Liabilities

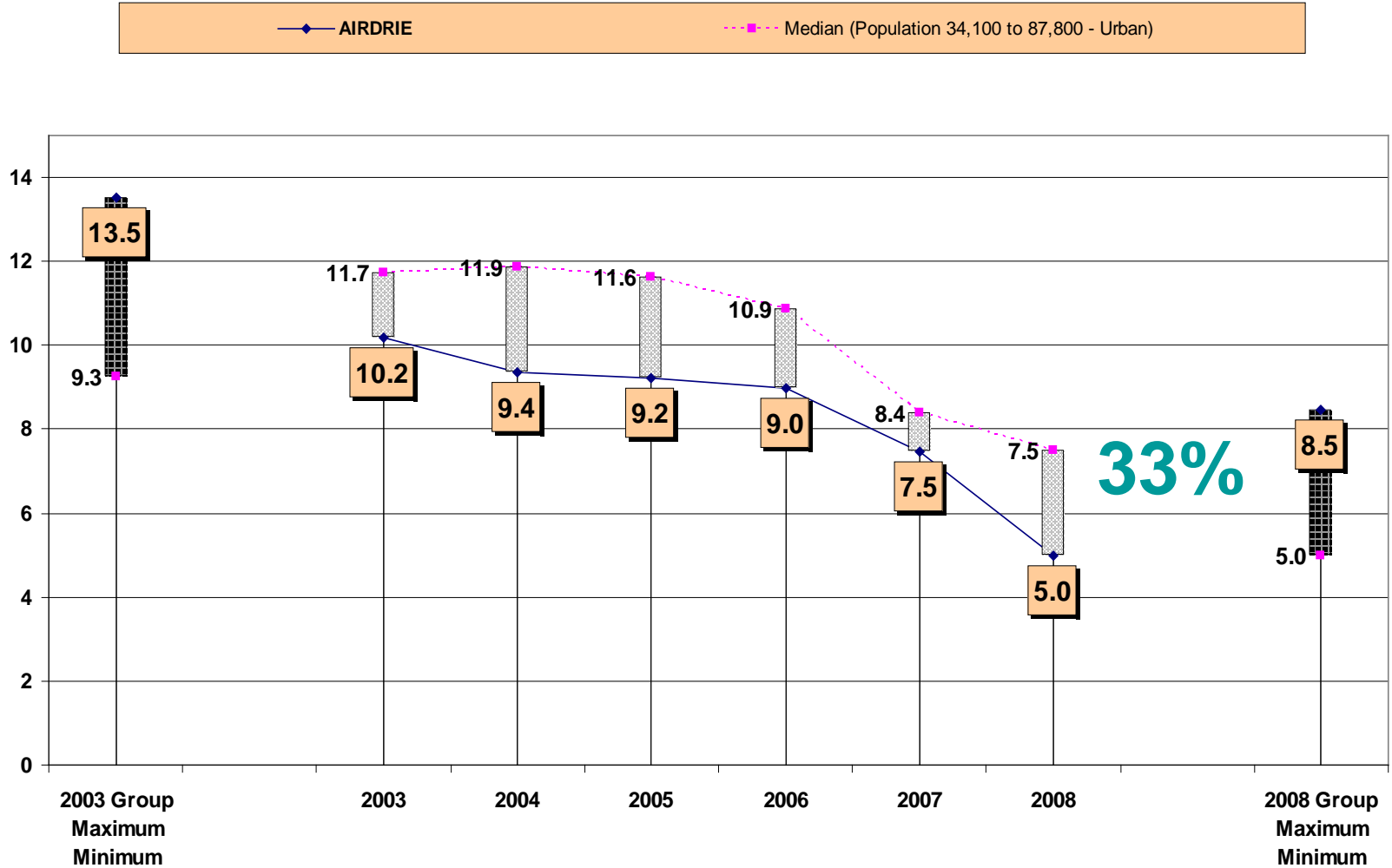
Net Municipal Equalized Tax Rate

0003



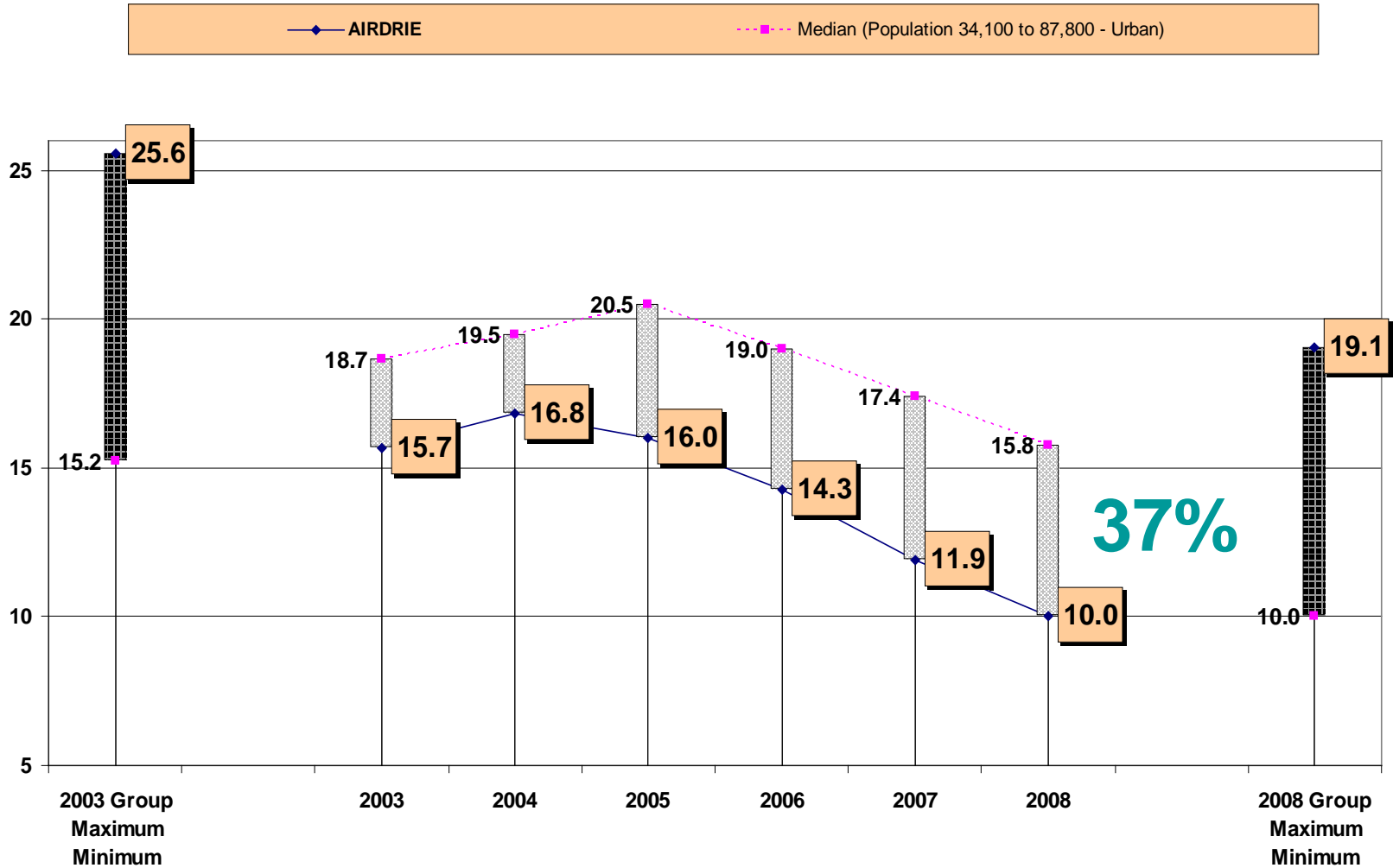
Note : Municipal Equalized Tax Rate is calculated based on total equalized assessment and net municipal property tax.

Residential Equalized Tax Rate



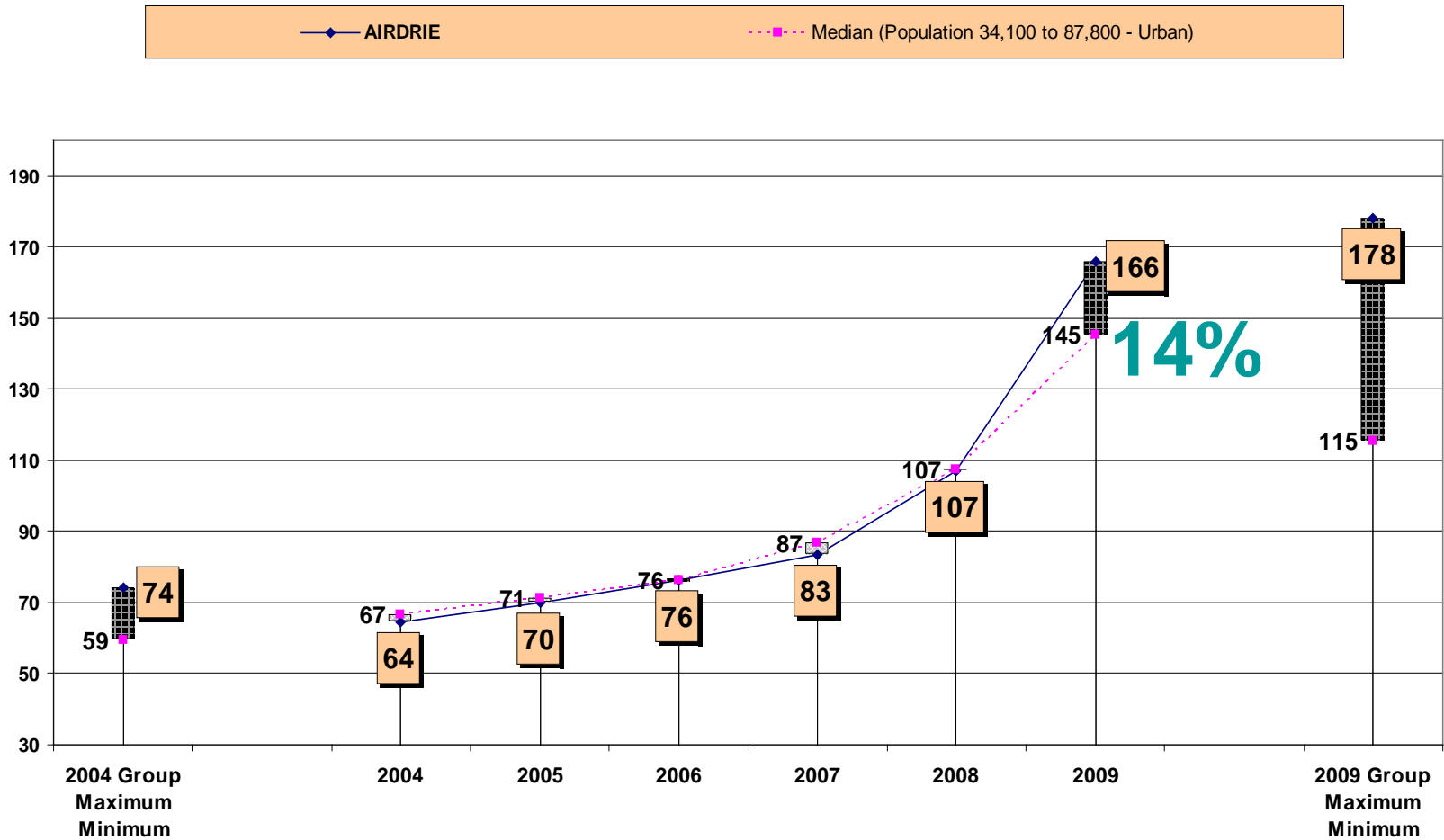
Note : Residential Equalized Tax Rate is calculated based on gross residential property taxes and residential equalized assessment.

Non-Residential Equalized Tax Rate



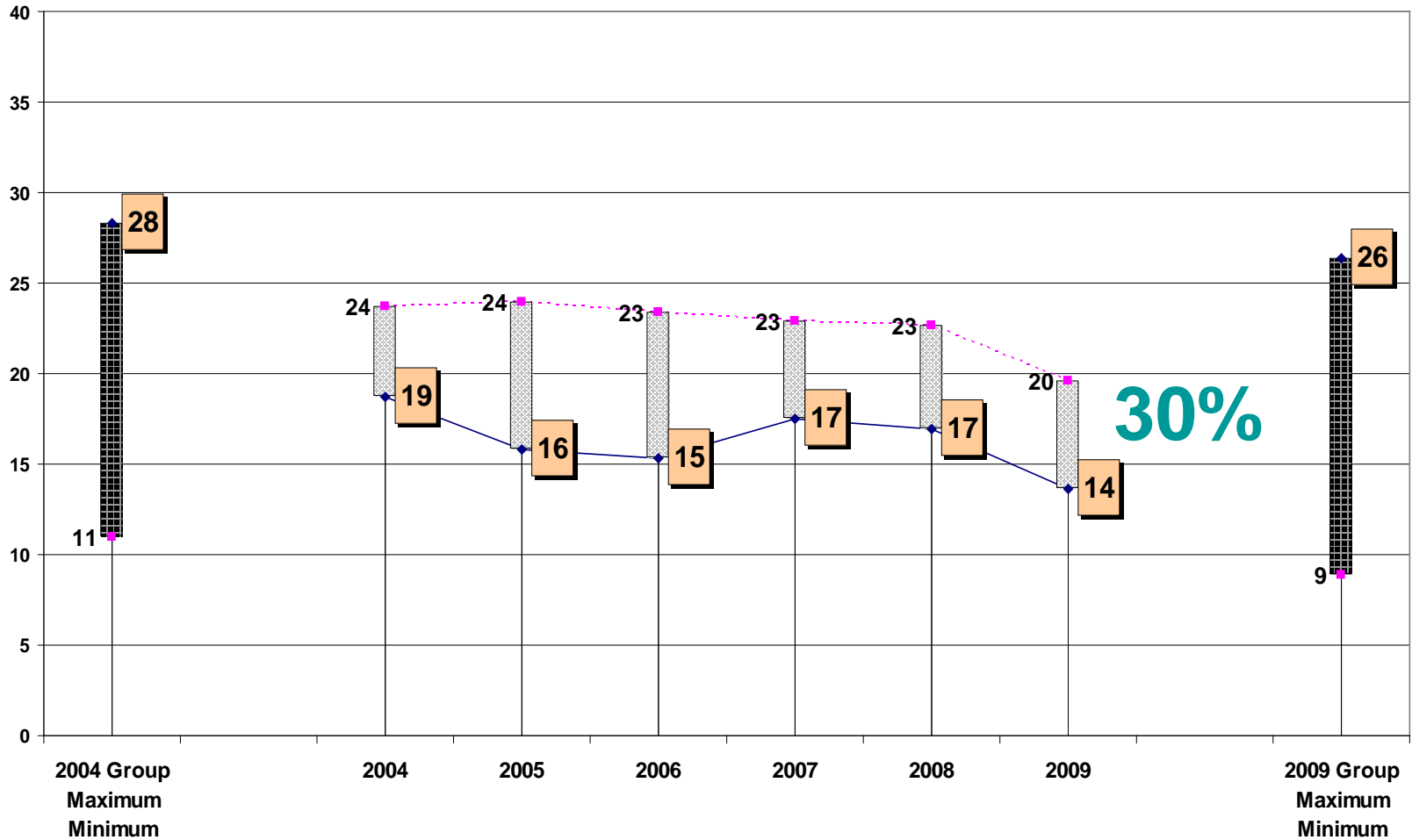
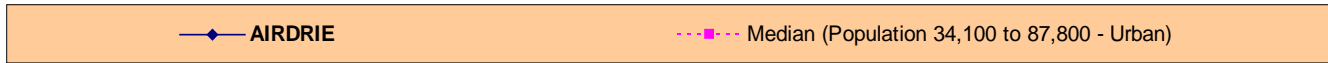
Note : Non-Residential Equalized Tax Rate is calculated based on gross non-residential property taxes and non-residential equalized assessment.

Total Equalized Assessment Per Capita (in thousands)

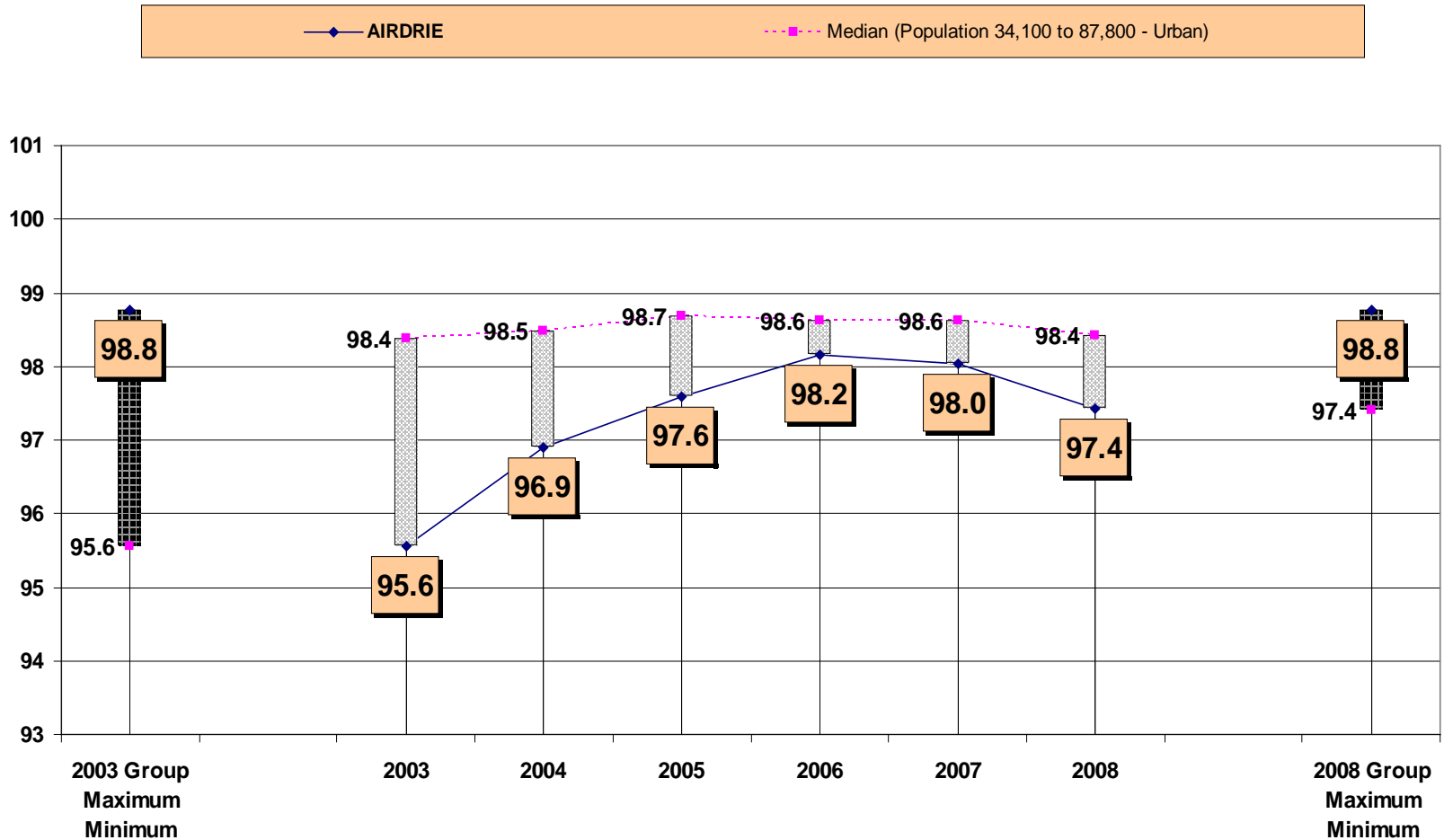


Note : Equalized Assessment Per Capita approximates a municipality's ability to generate property tax revenue in comparison to similar municipalities.

Non-Residential Equalized Assessment As % of Total

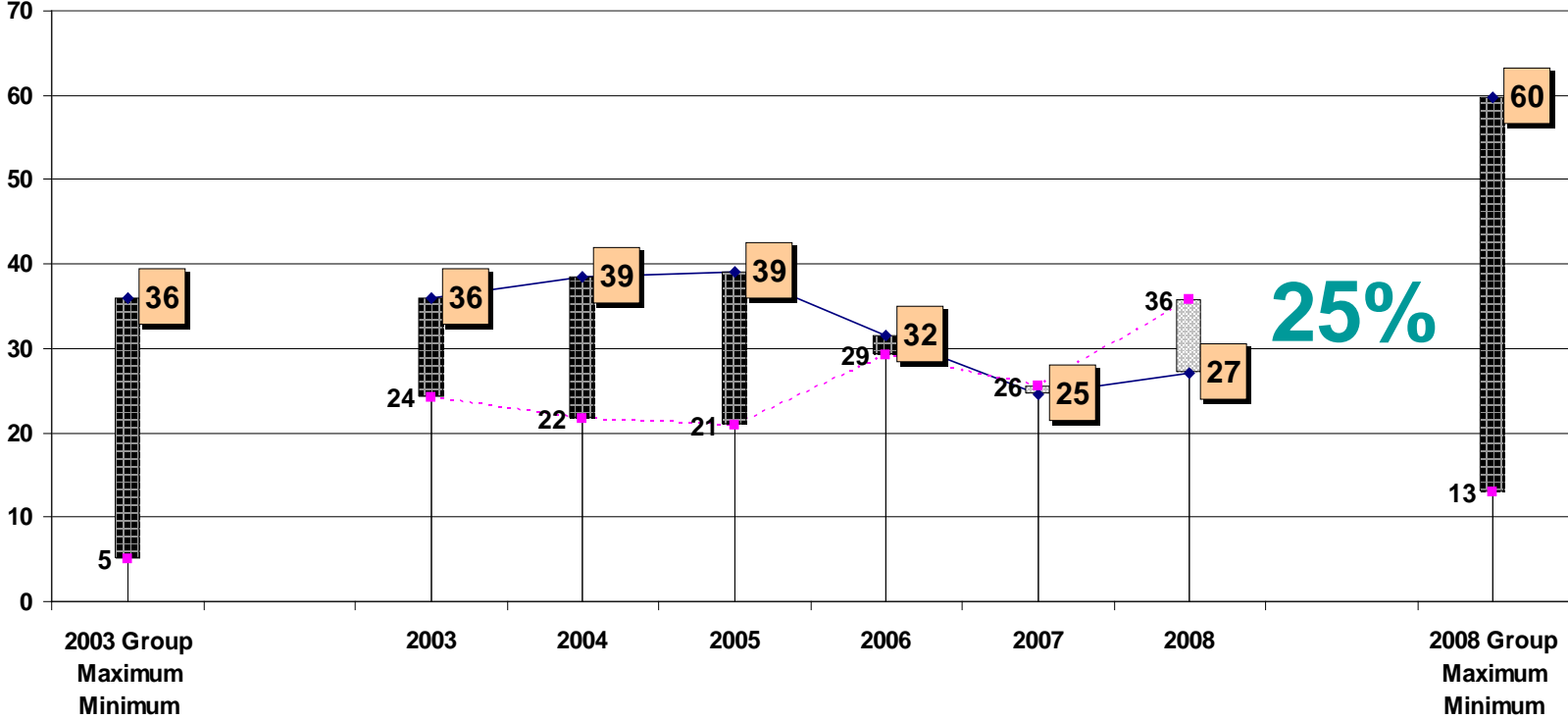
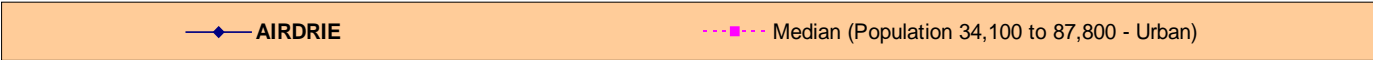


Tax Collection Rate



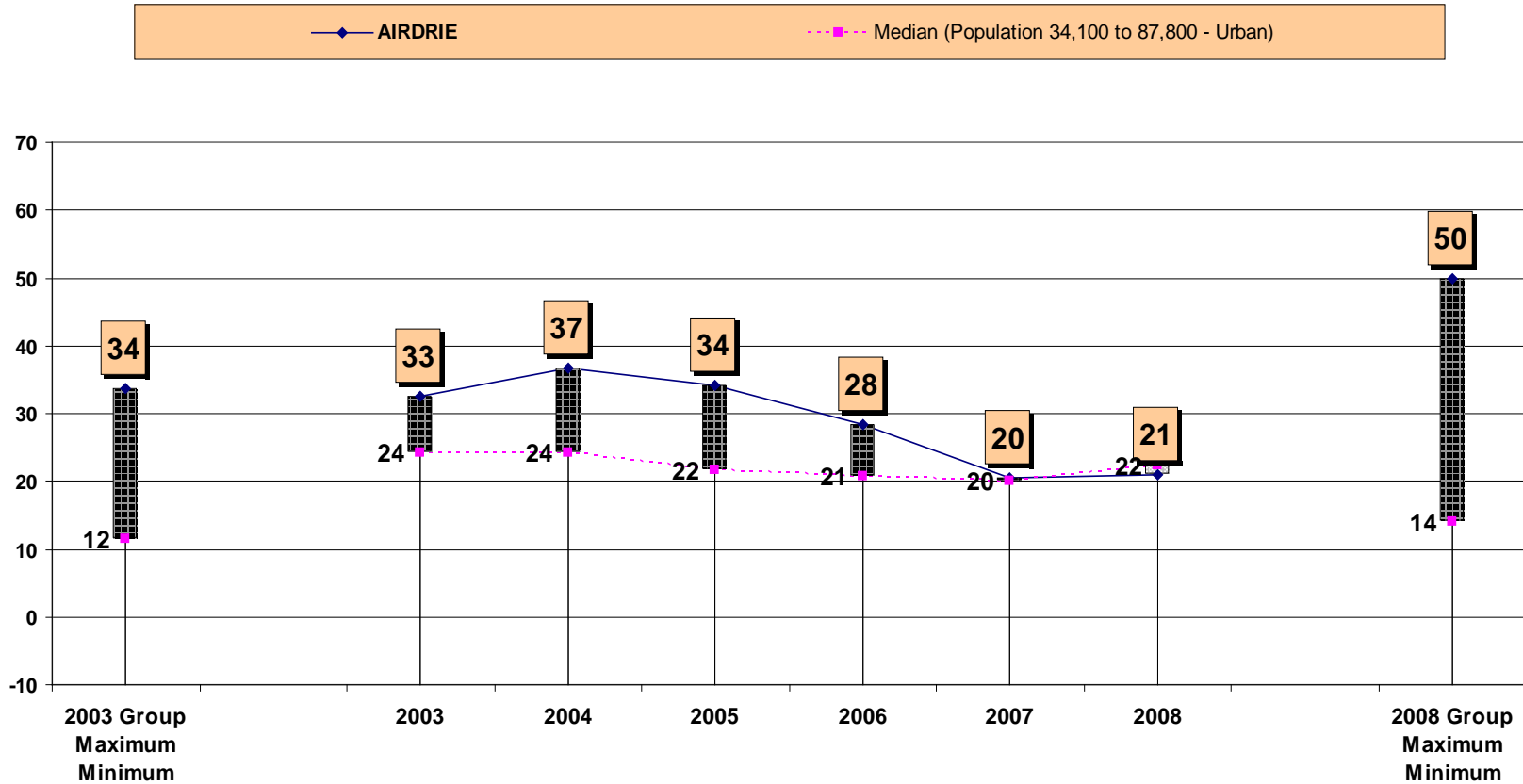
Note : This indicator reflects the percentage of taxes and grants in place of taxes which are collected by the municipality in the year in which they are levied.

Percent of Debt Limit Used



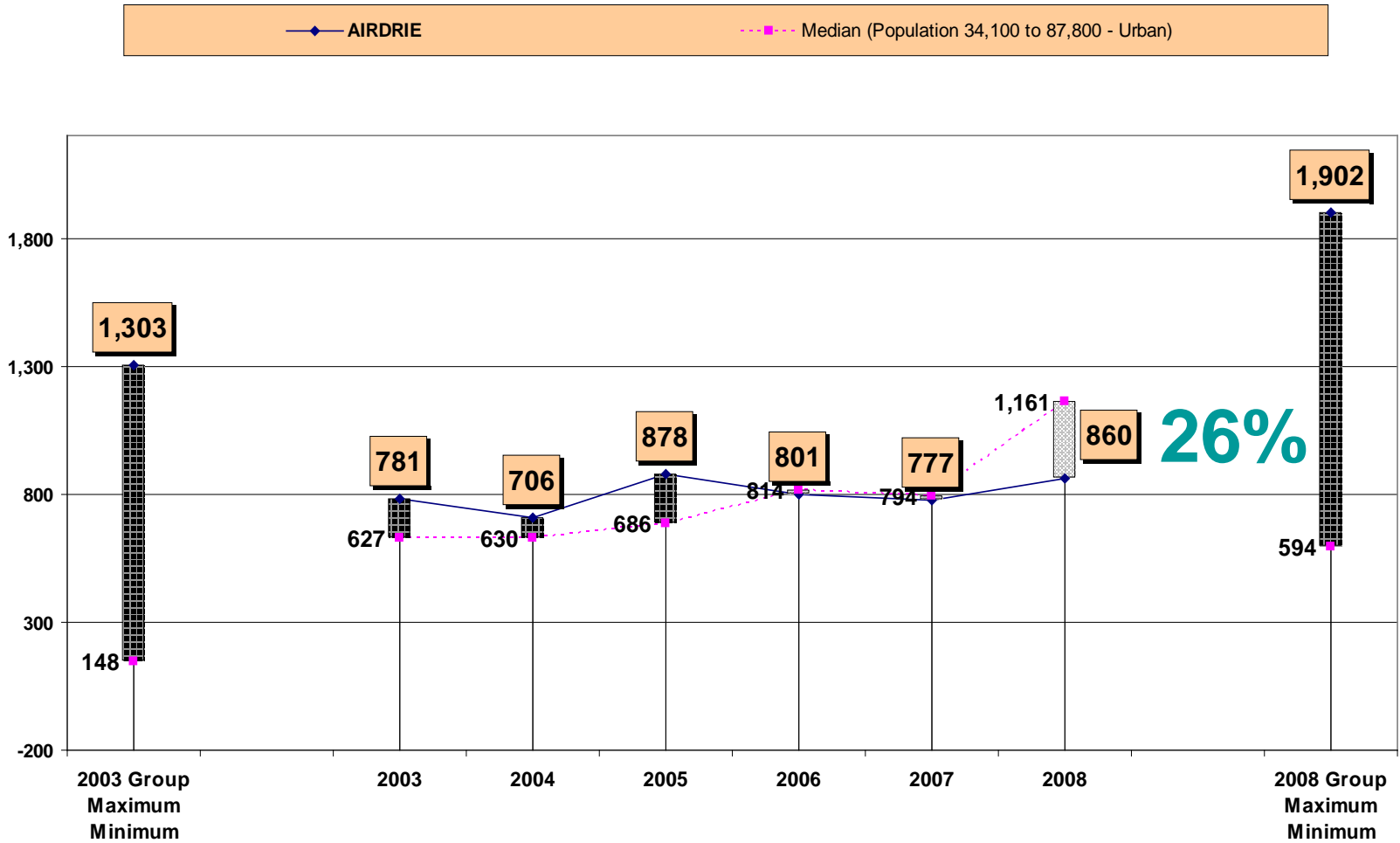
Note : This graph shows, in percentage terms, the municipality's debt (municipal and excluded functions) as a percentage of the regulated limit. This is compared to the median for the group of similar municipalities.

Percent of Debt Service Limit Used



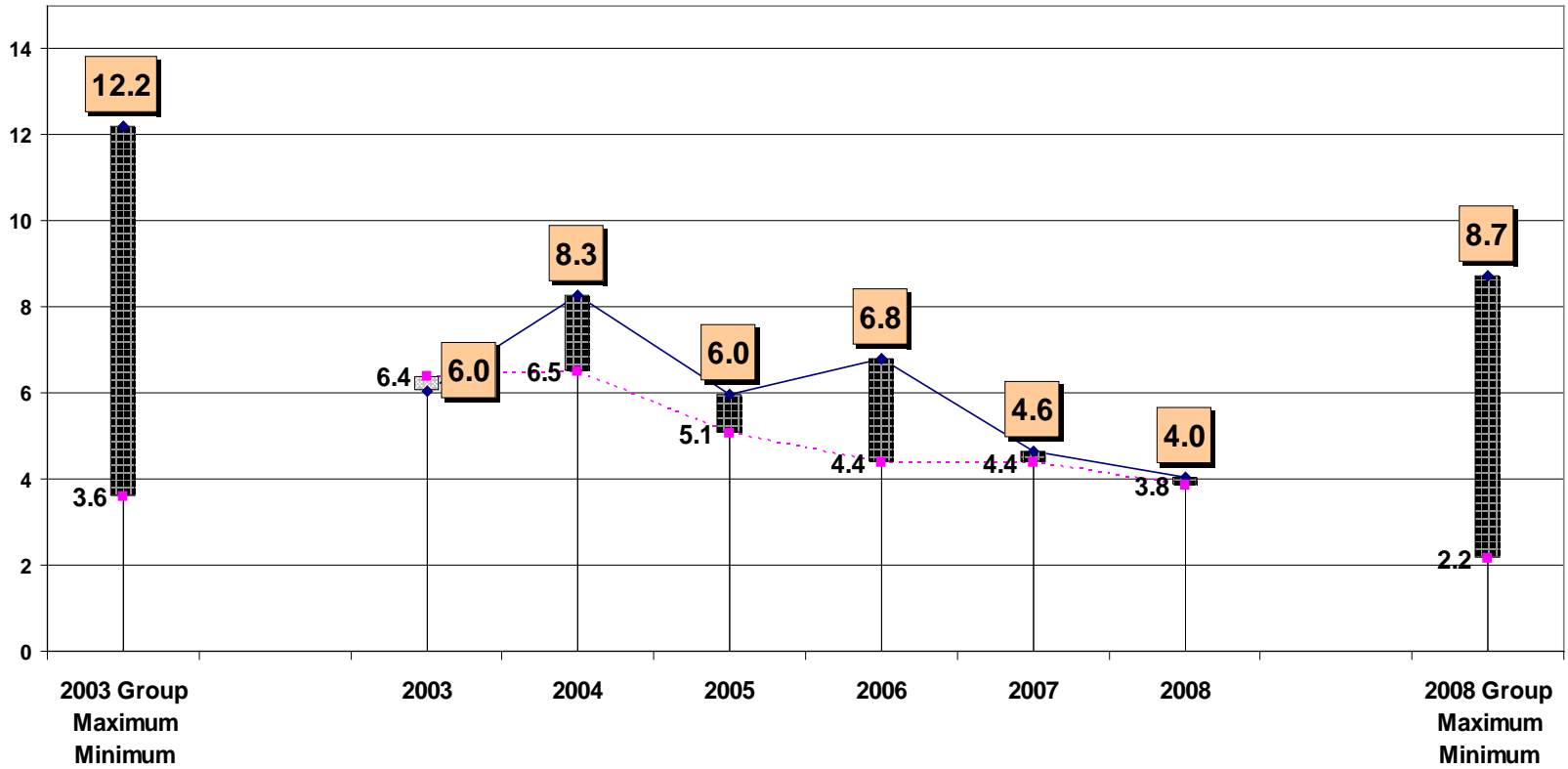
Note: This graph shows, in percentage terms, the municipality's current debt servicing requirement (municipal and excluded functions) relative to the regulated limit. This is compared to the median for the group of similar municipalities.

Long Term Municipal Debt Per Capita



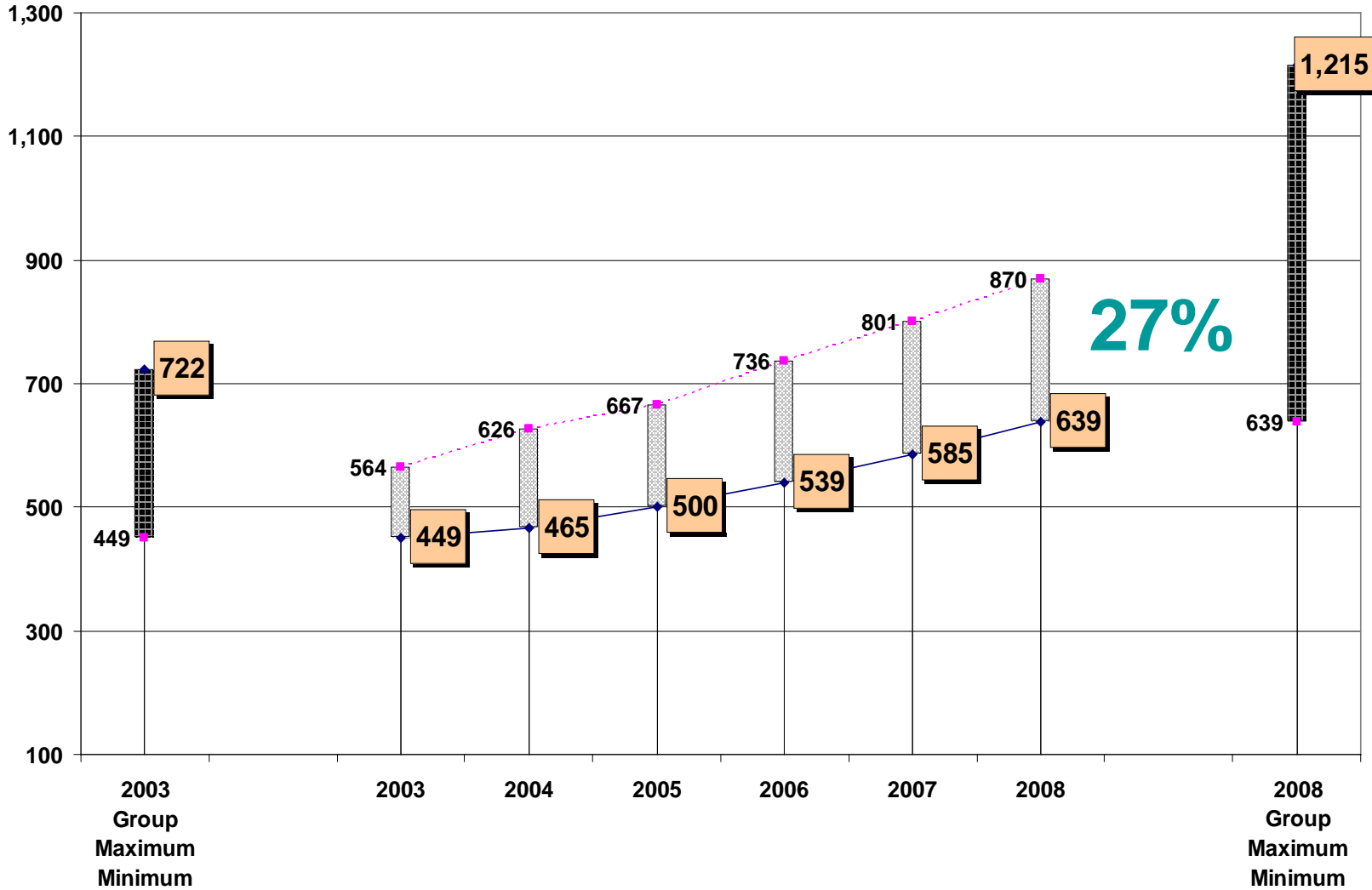
Note : Long term debt associated with excluded functions (gas and/or electricity) is not included.

Municipal Long Term Debt Servicing as a Percent of Total Revenue



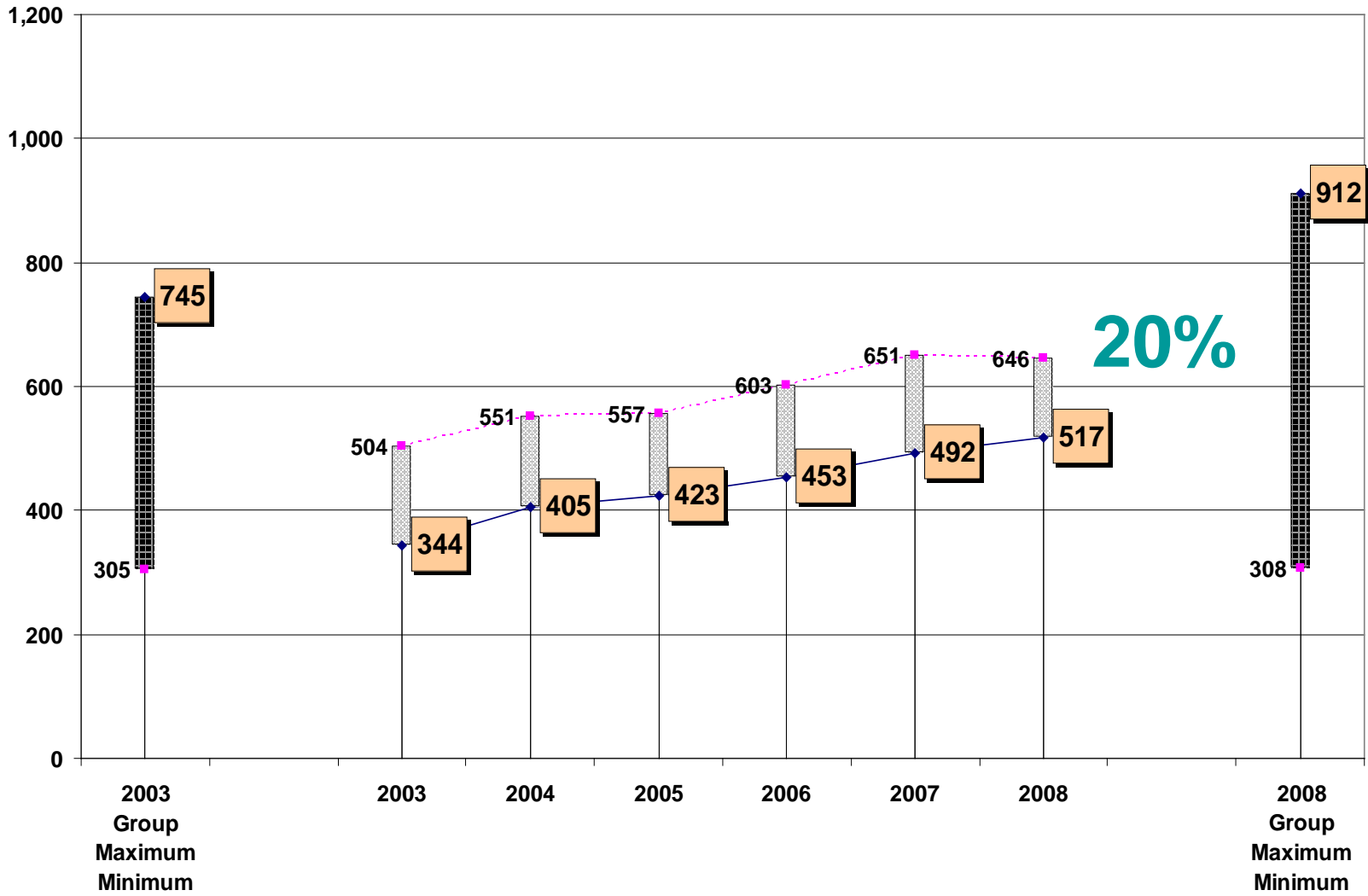
Note: The calculation represents the percentage of total (operating and capital) municipal revenue that was required to meet long term debt obligations (municipal only) throughout the year.

Net Municipal Property Taxes Per Capita

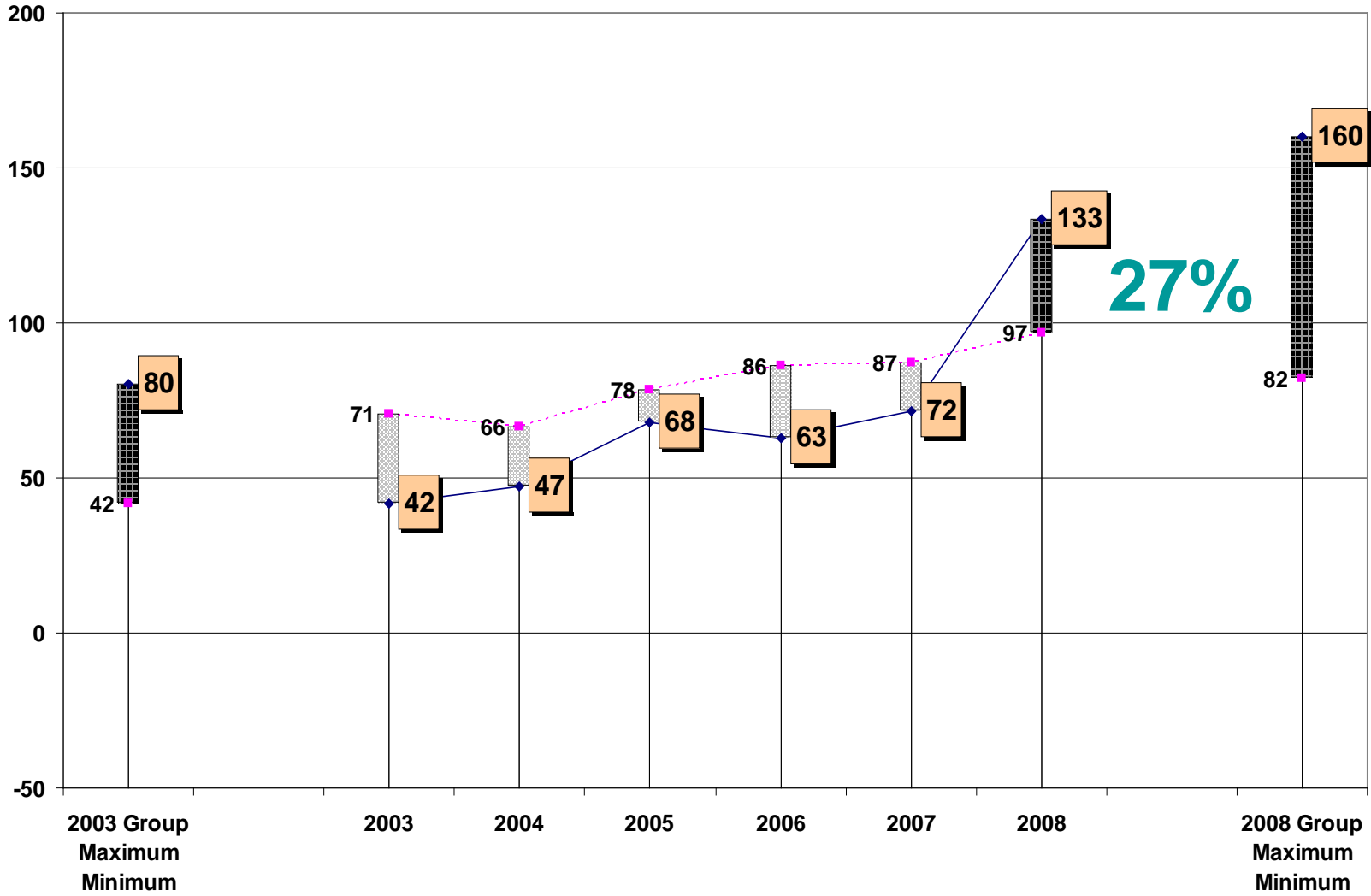


Sales and User Charges Per Capita

◆ AIRDRIE
 ◆ Median (Population 34,100 to 87,800 - Urban)

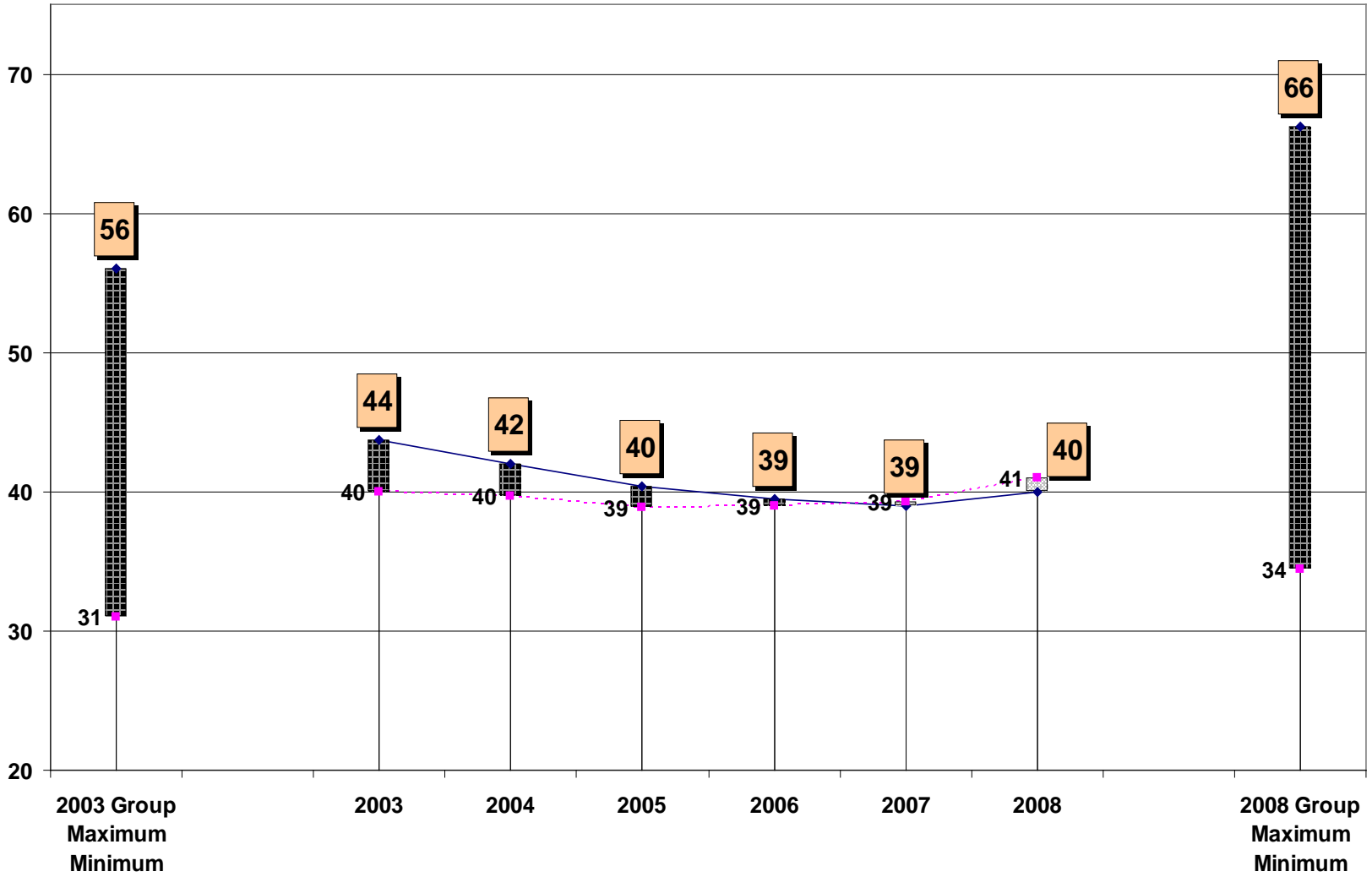


Provincial and Federal Operating Grants Per Capita

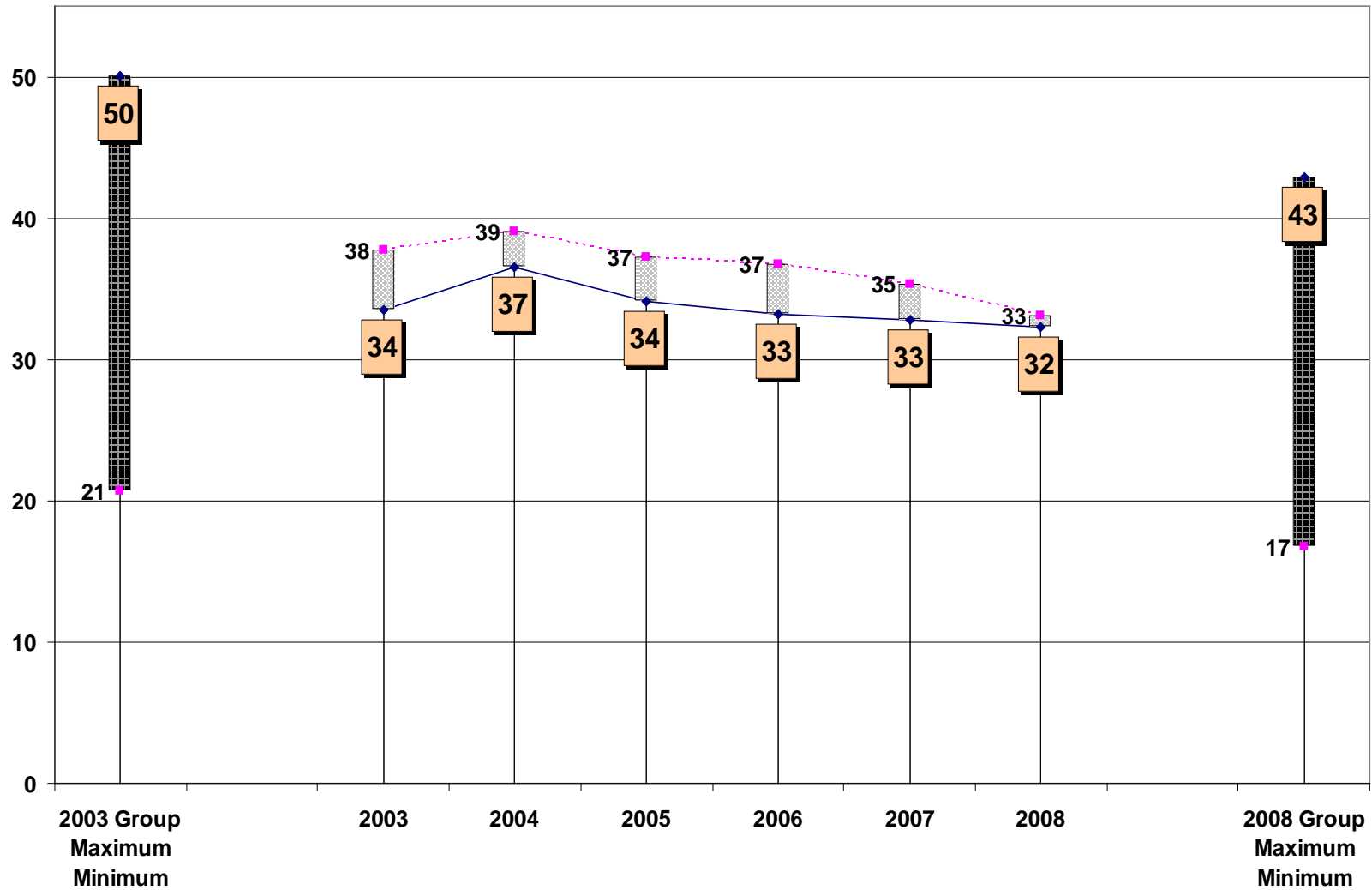


Net Municipal Property Taxes As % of Total Operating Revenue

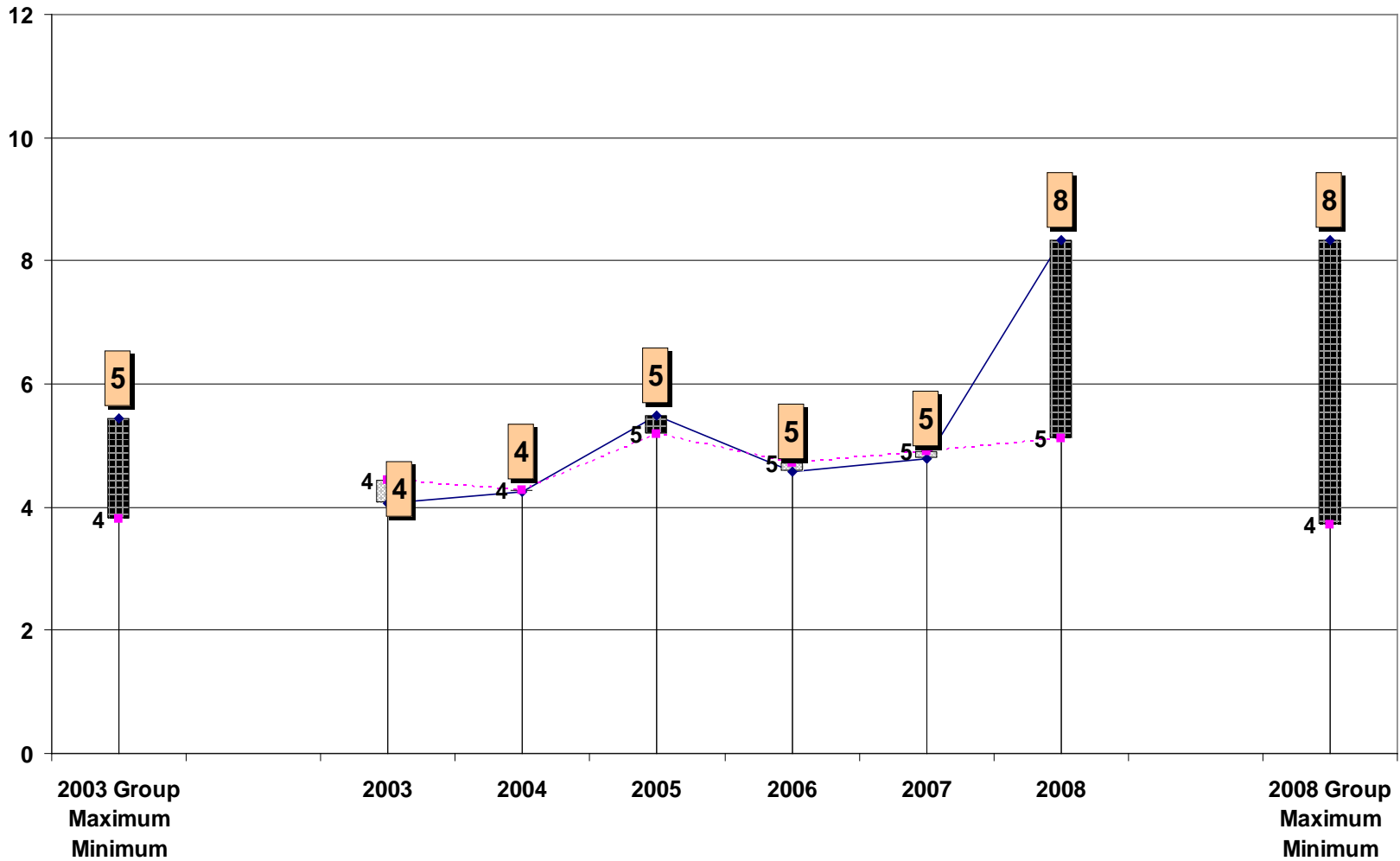
—◆— AIRDRIE
 - -■- - Median (Population 34,100 to 87,800 - Urban)



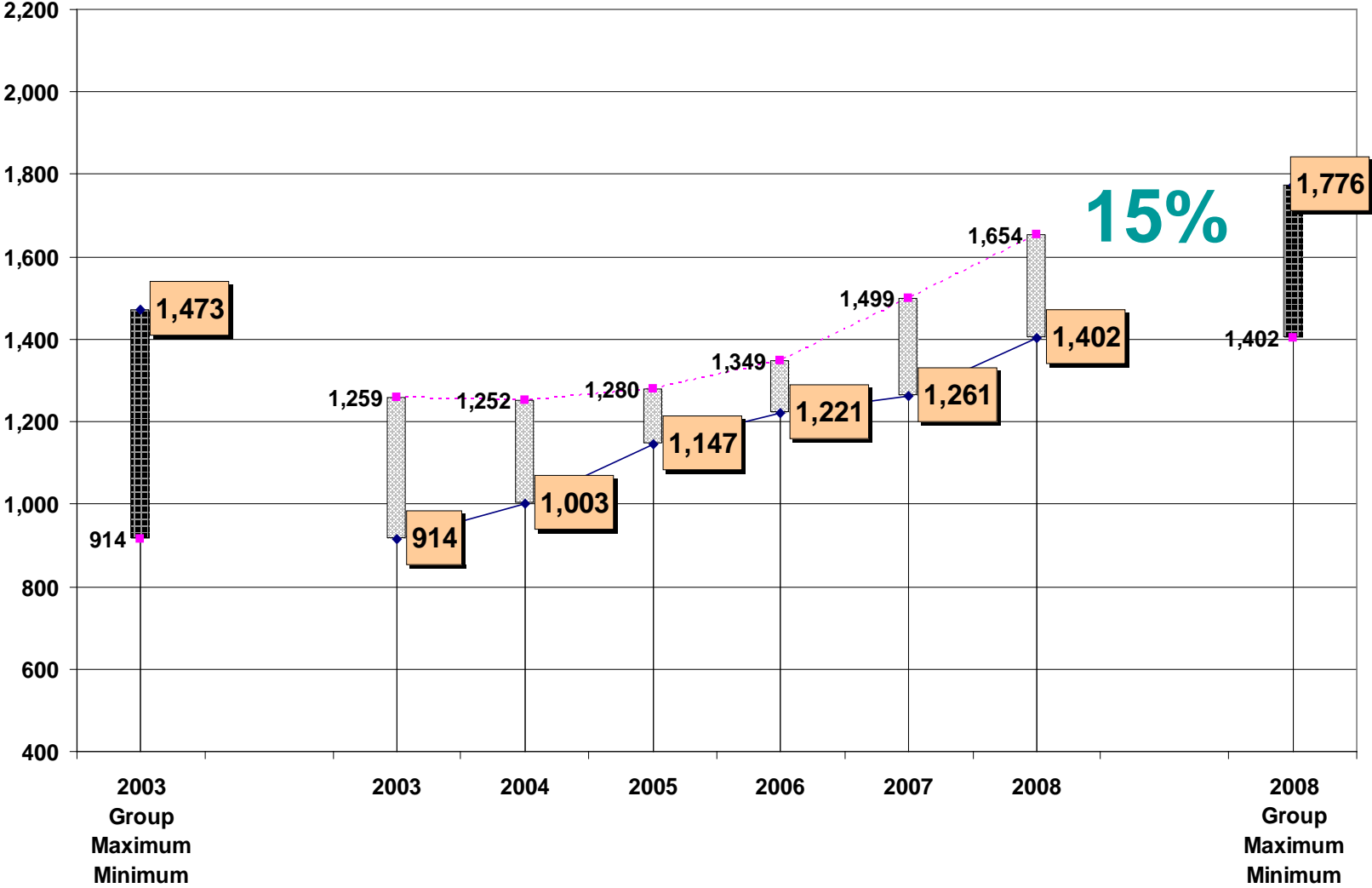
Sales and User Charges As % of Total Operating Revenue



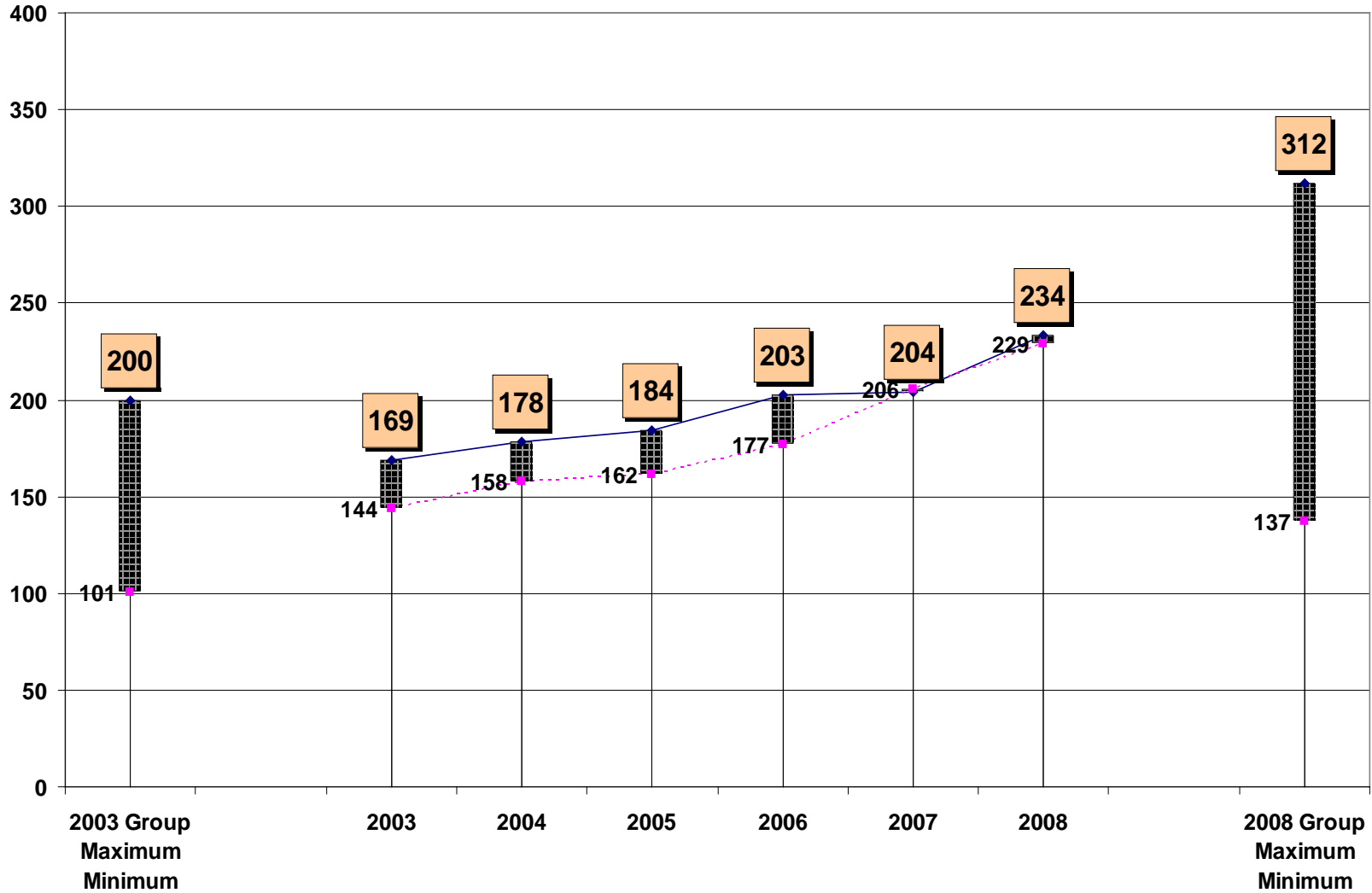
Provincial and Federal Operating Grants As % of Total Operating Revenue



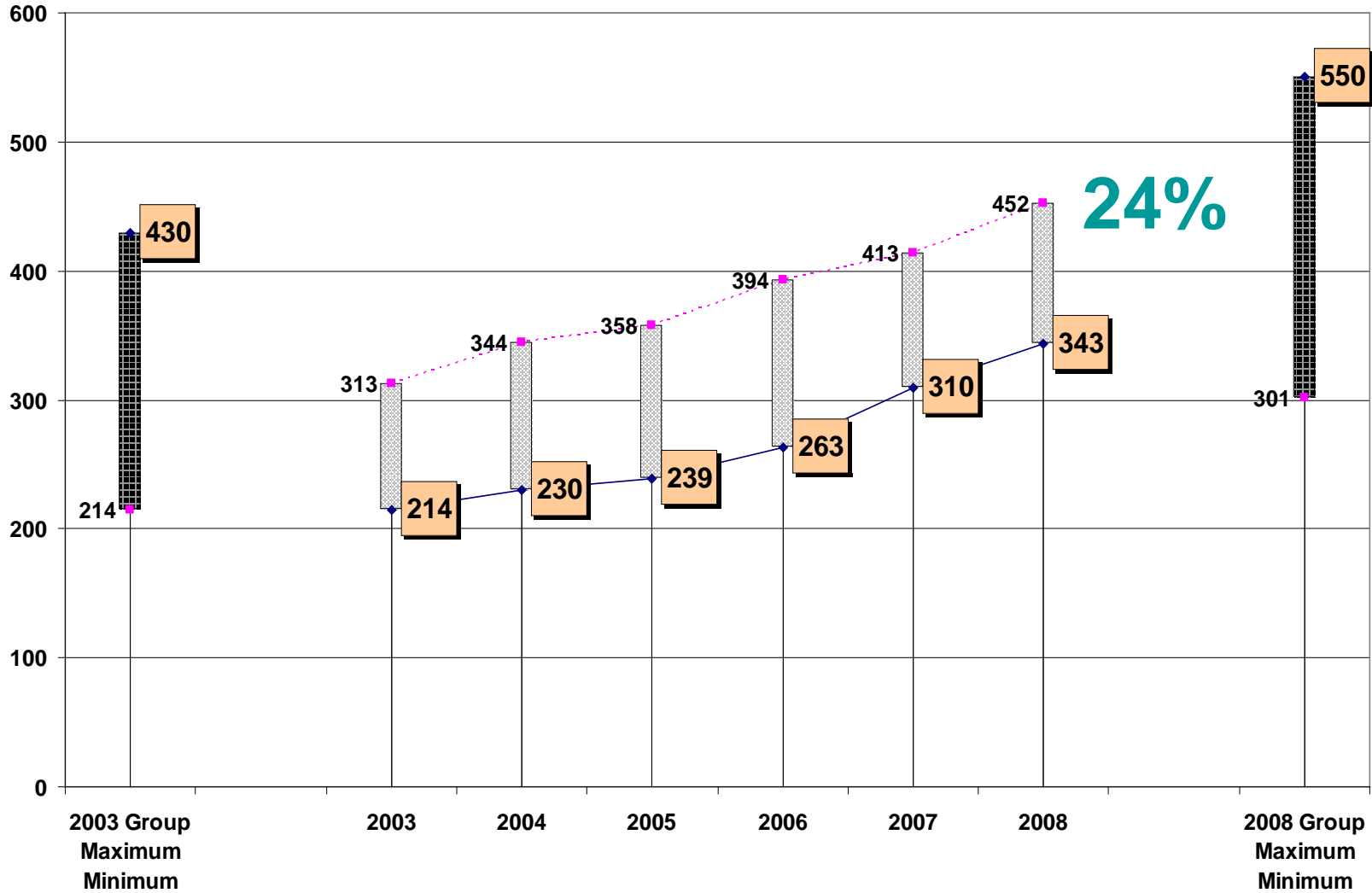
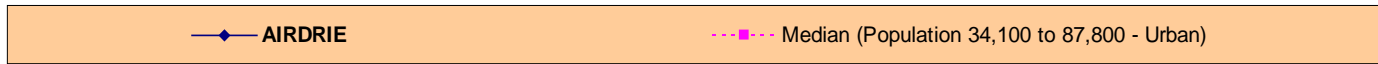
Total Operating Expenditures Per Capita



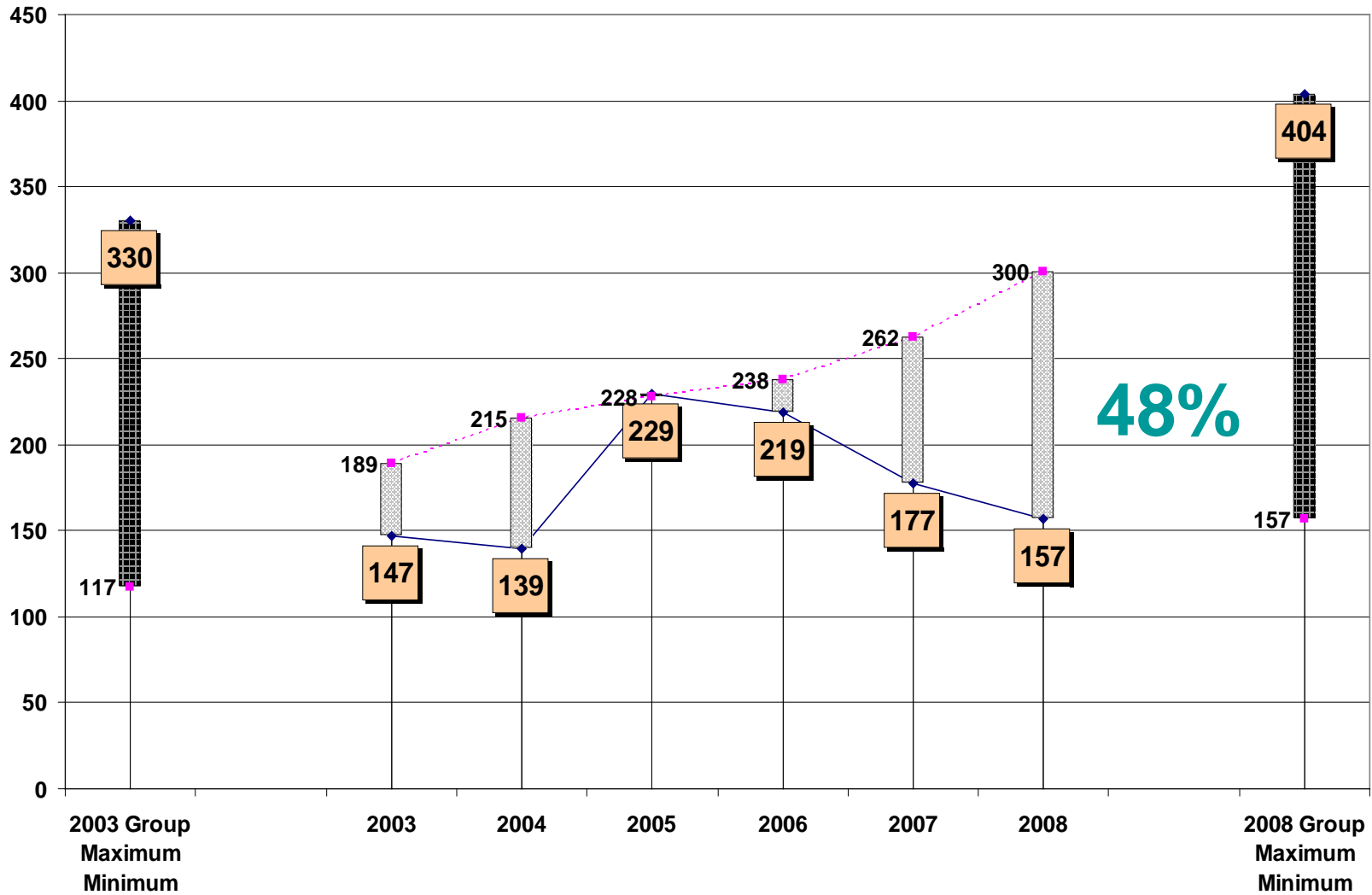
General Government Operating Expenditures Per Capita



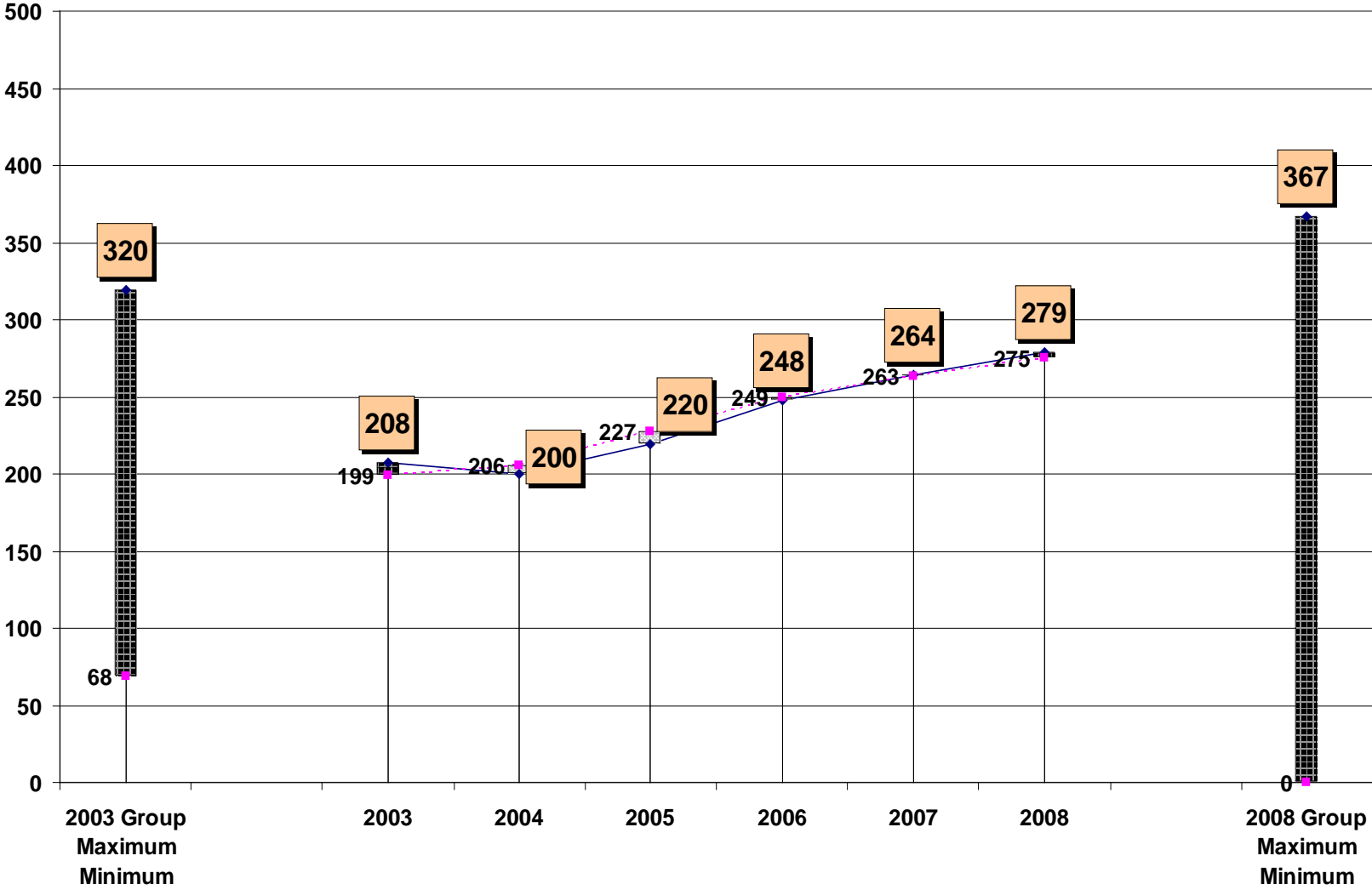
Protective Services Operating Expenditures Per Capita



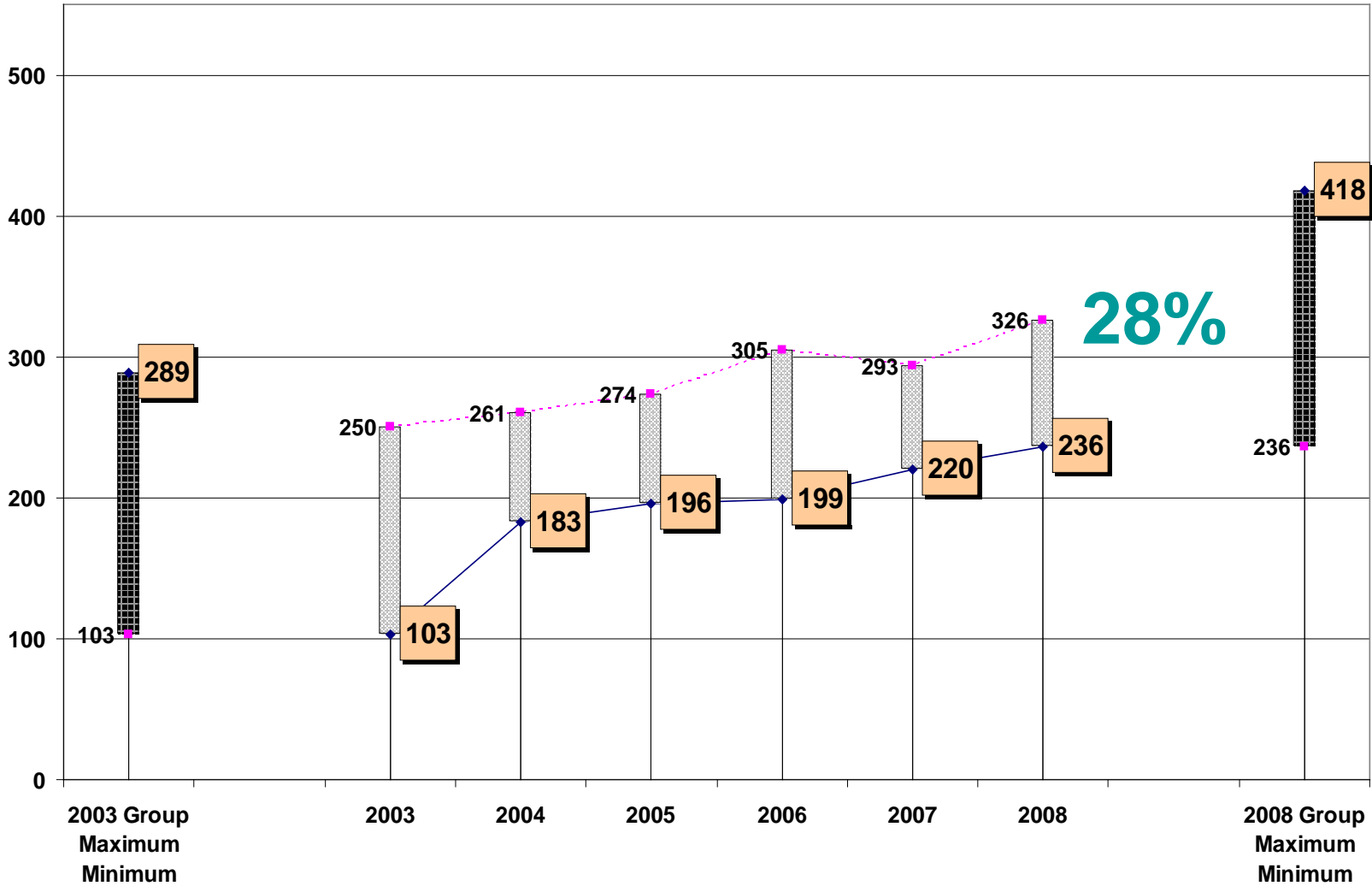
Transportation Operating Expenditures Per Capita



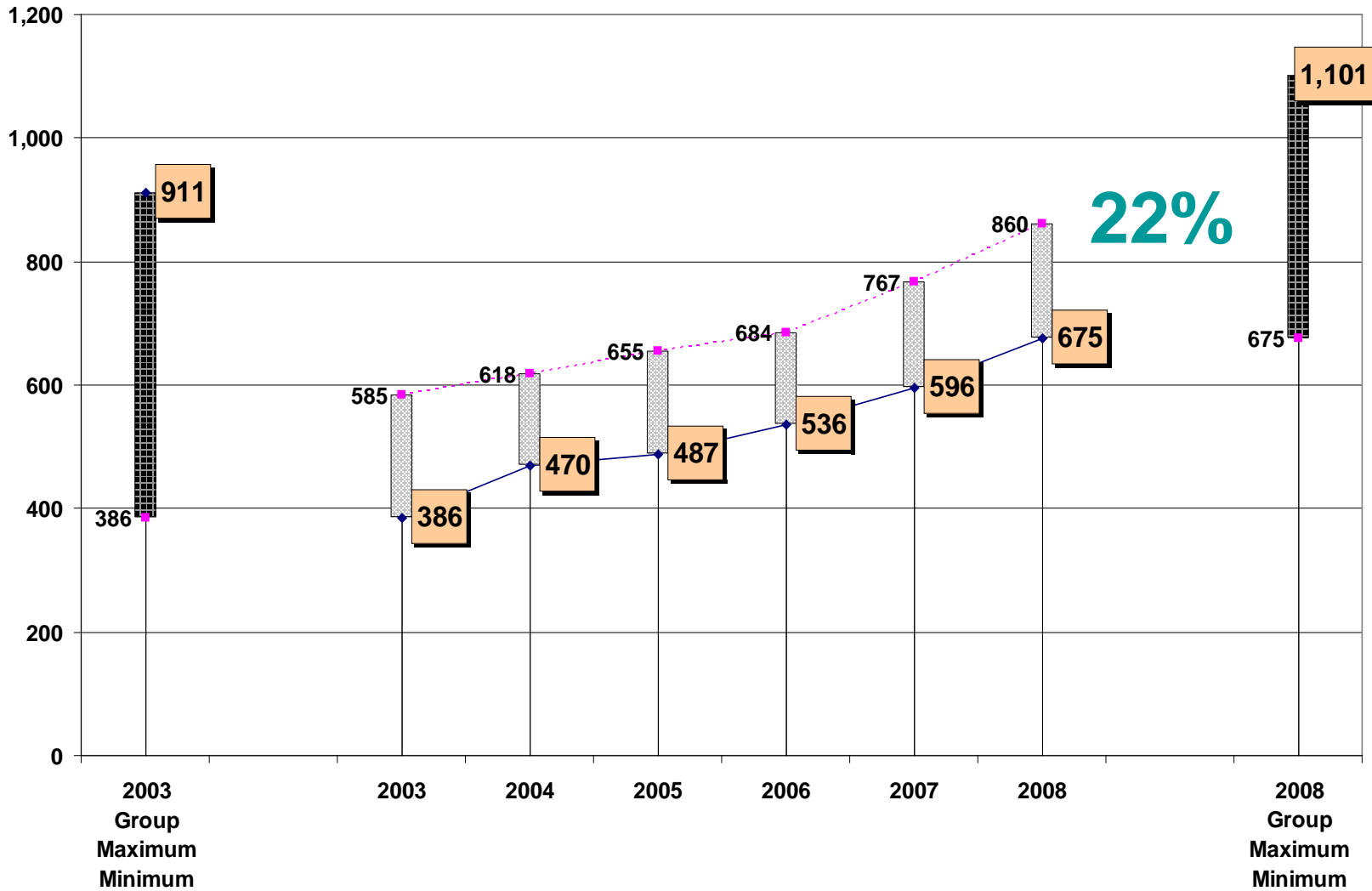
Environmental Protection Operating Expenditures Per Capita



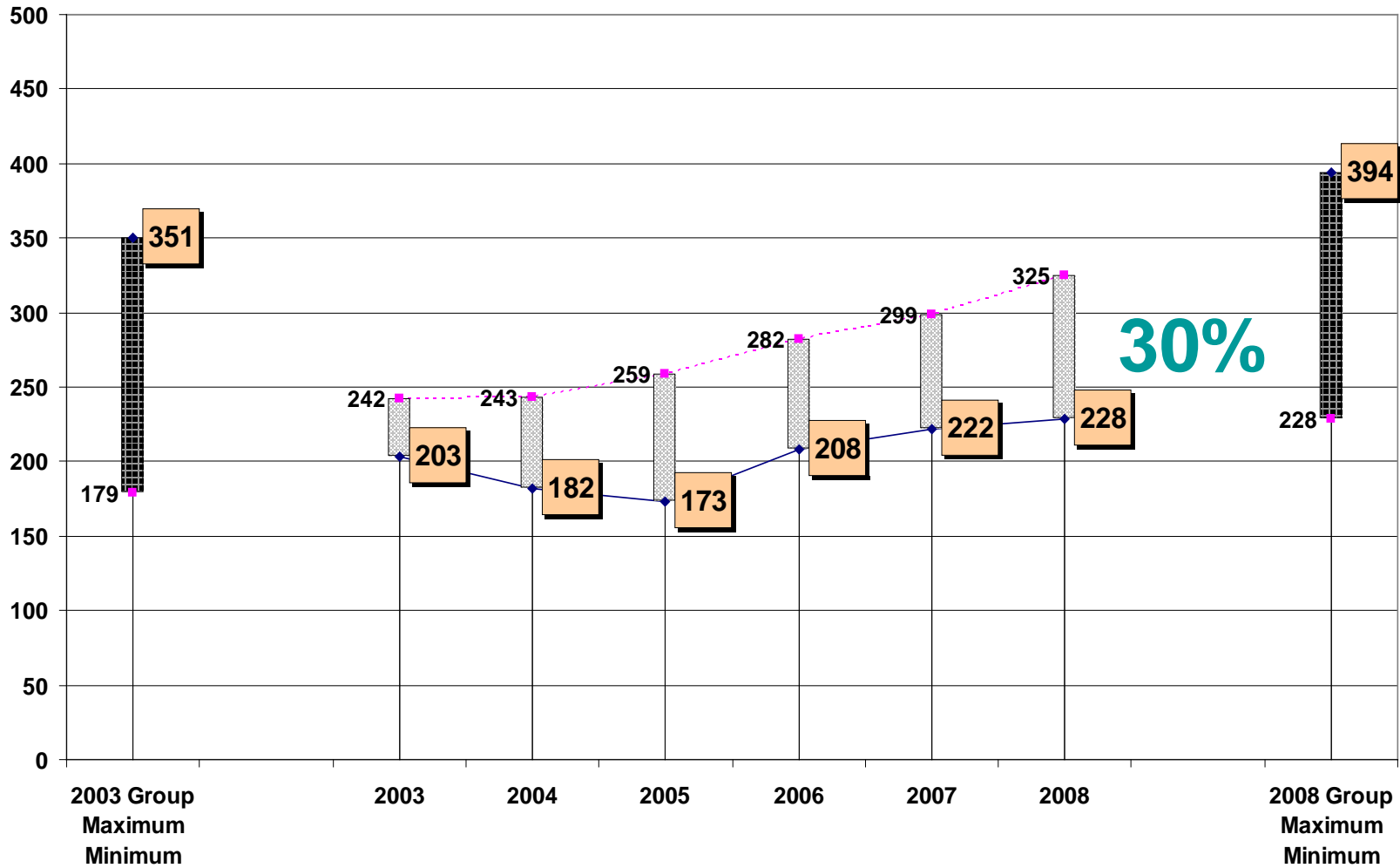
Recreation Operating Expenditures Per Capita



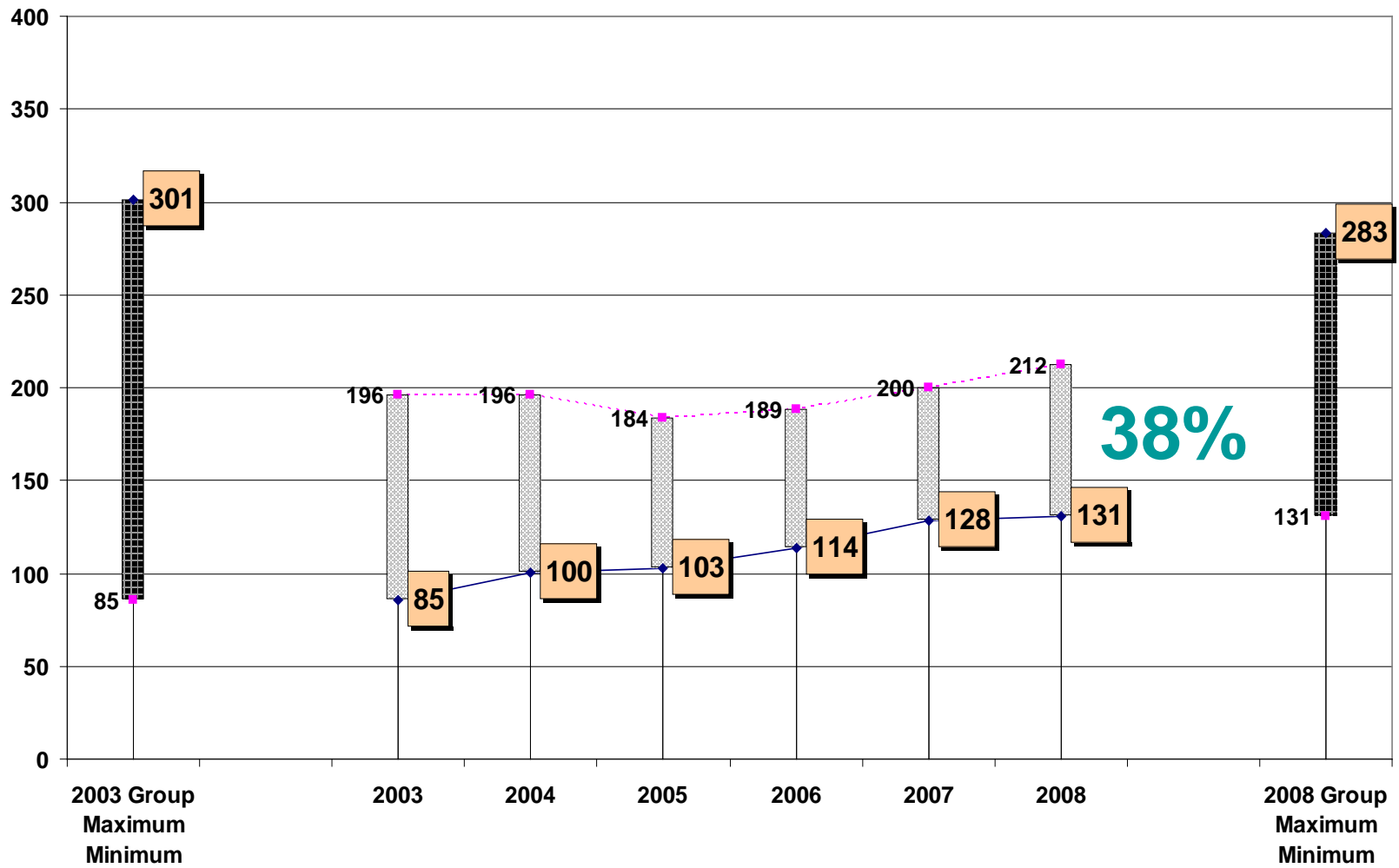
Per Capita Operating Expenditures - Salaries, Wages and Benefits



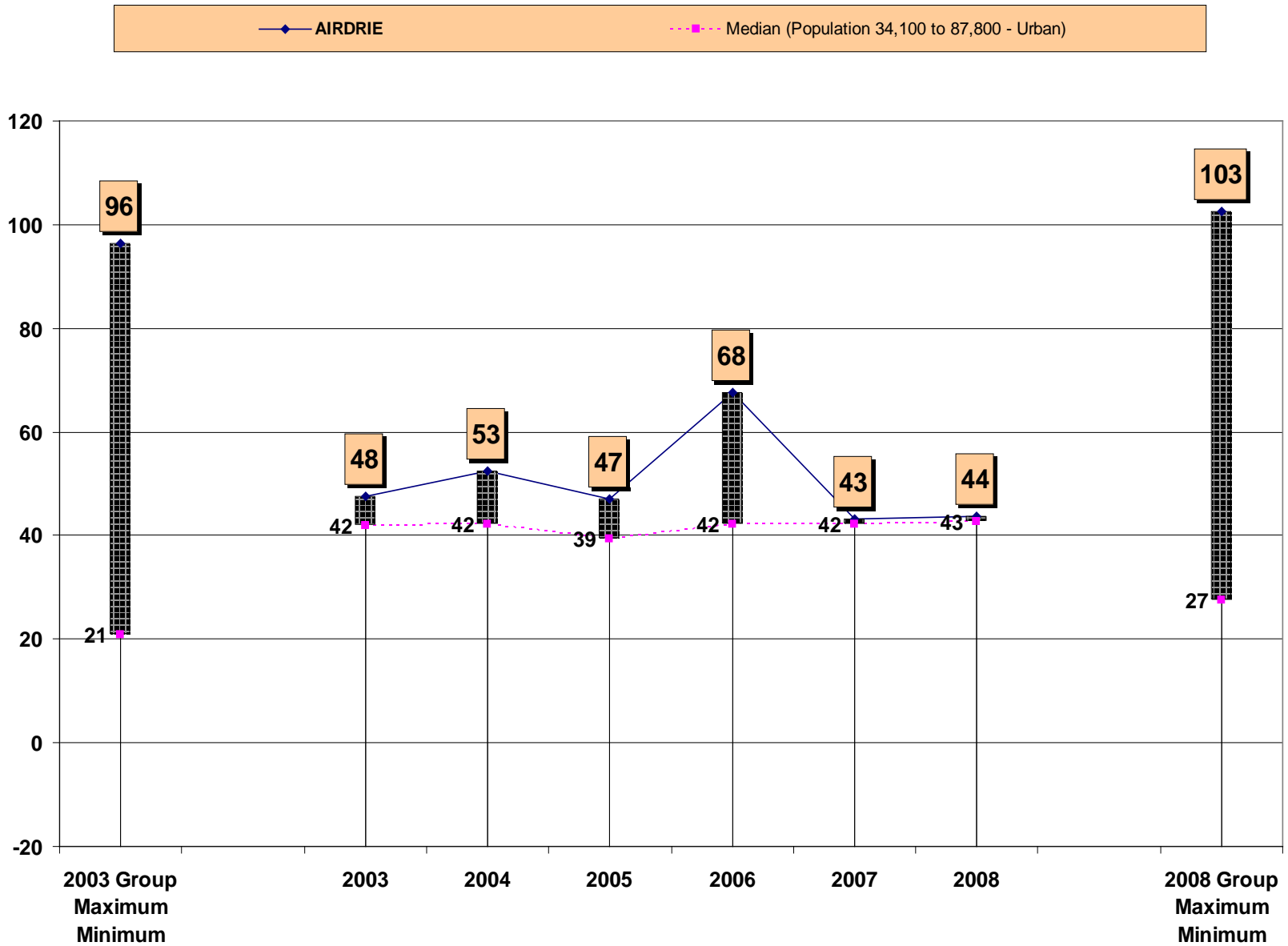
Per Capita Operating Expenditures - Contracted and General Services



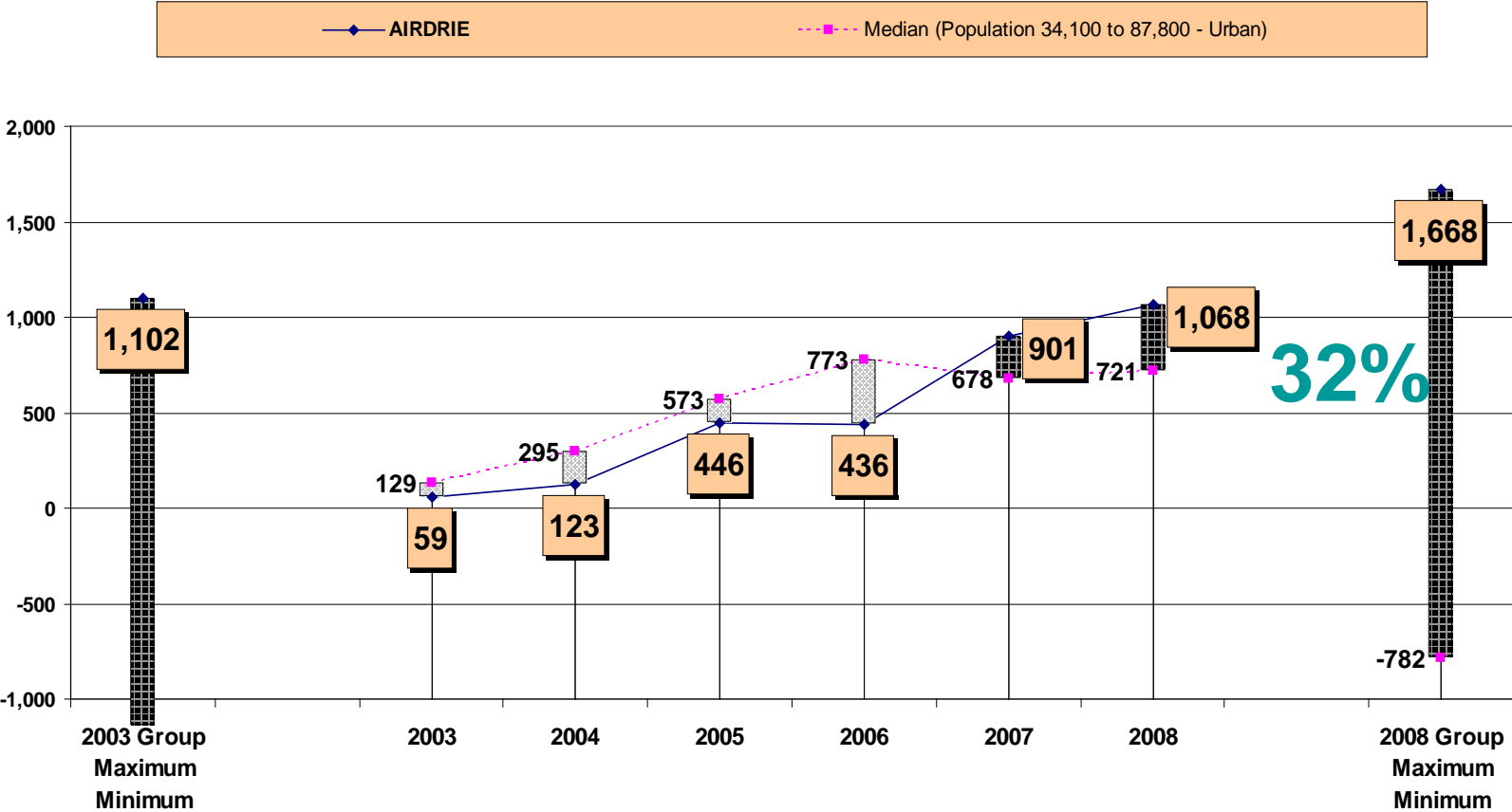
Per Capita Operating Expenditures - Materials, Goods, Supplies and Utilities



Per Capita Operating Expenditures - Bank Charges and Interest

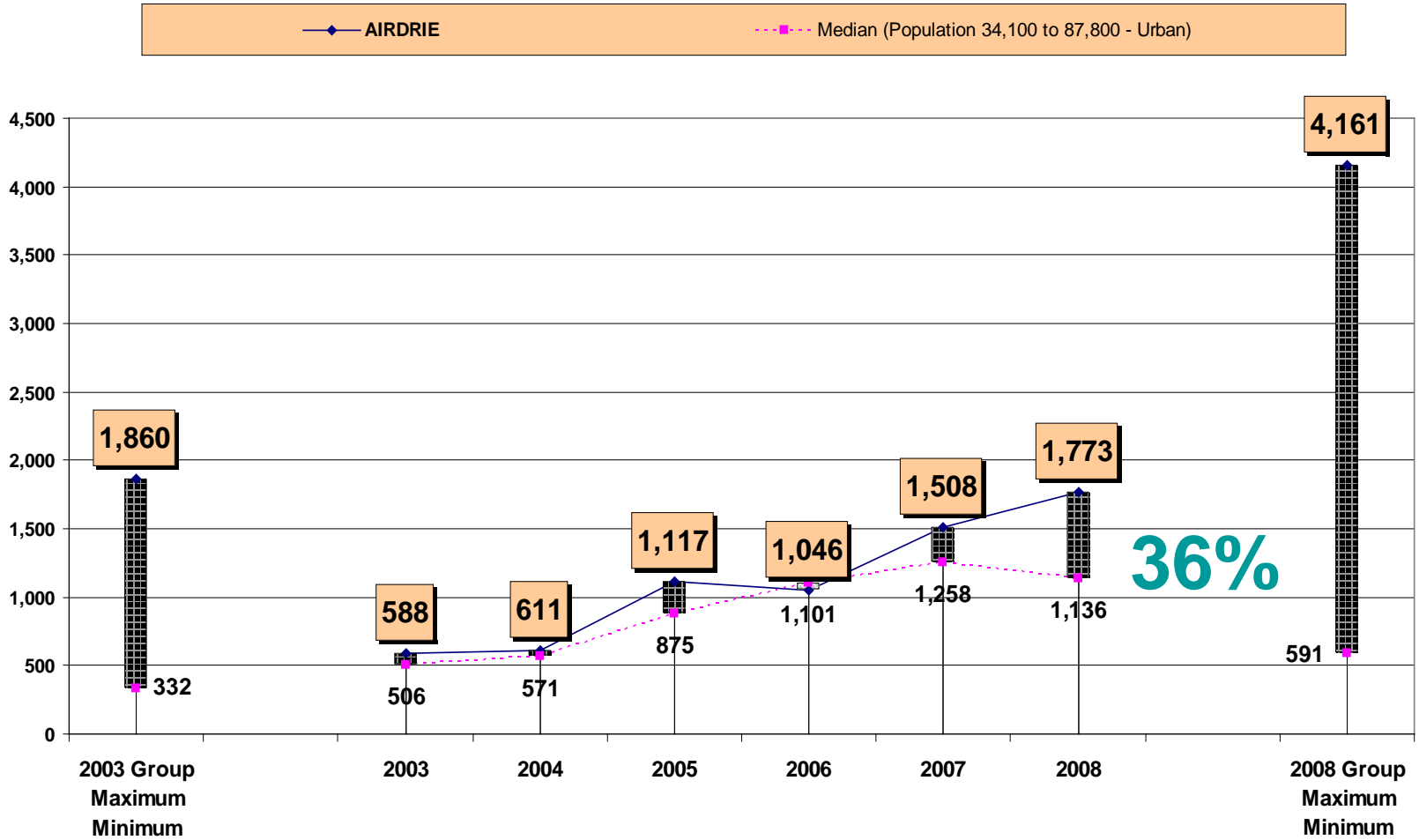


Long Term Liquidity Per Capita



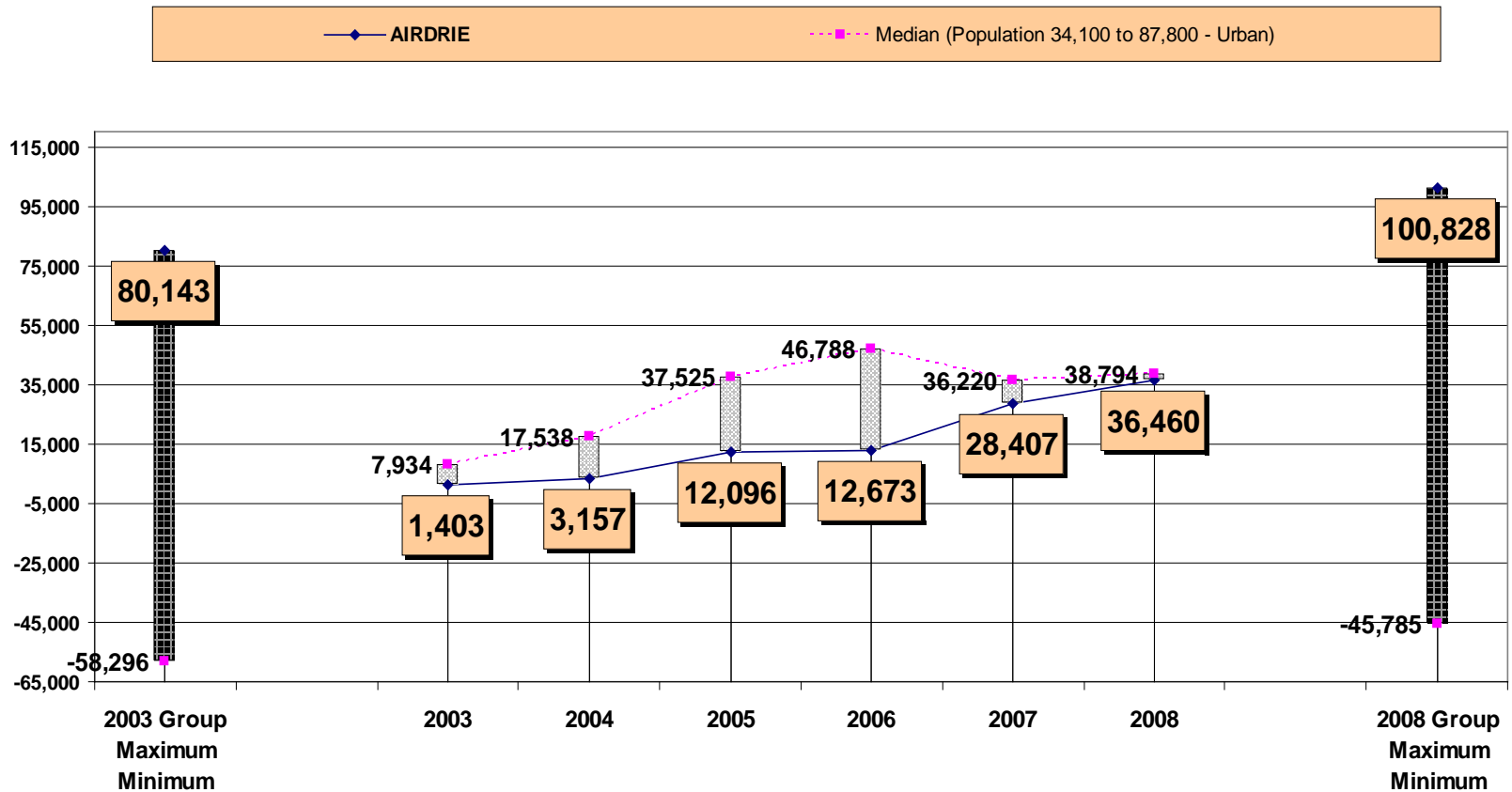
Note : Long term liquidity equals all financial assets less liabilities. A positive result indicates the assets remaining if all liabilities were paid in full. A negative result indicates liabilities to be paid with future revenues. Gas and electric functions are included where applicable.

Reserves Per Capita



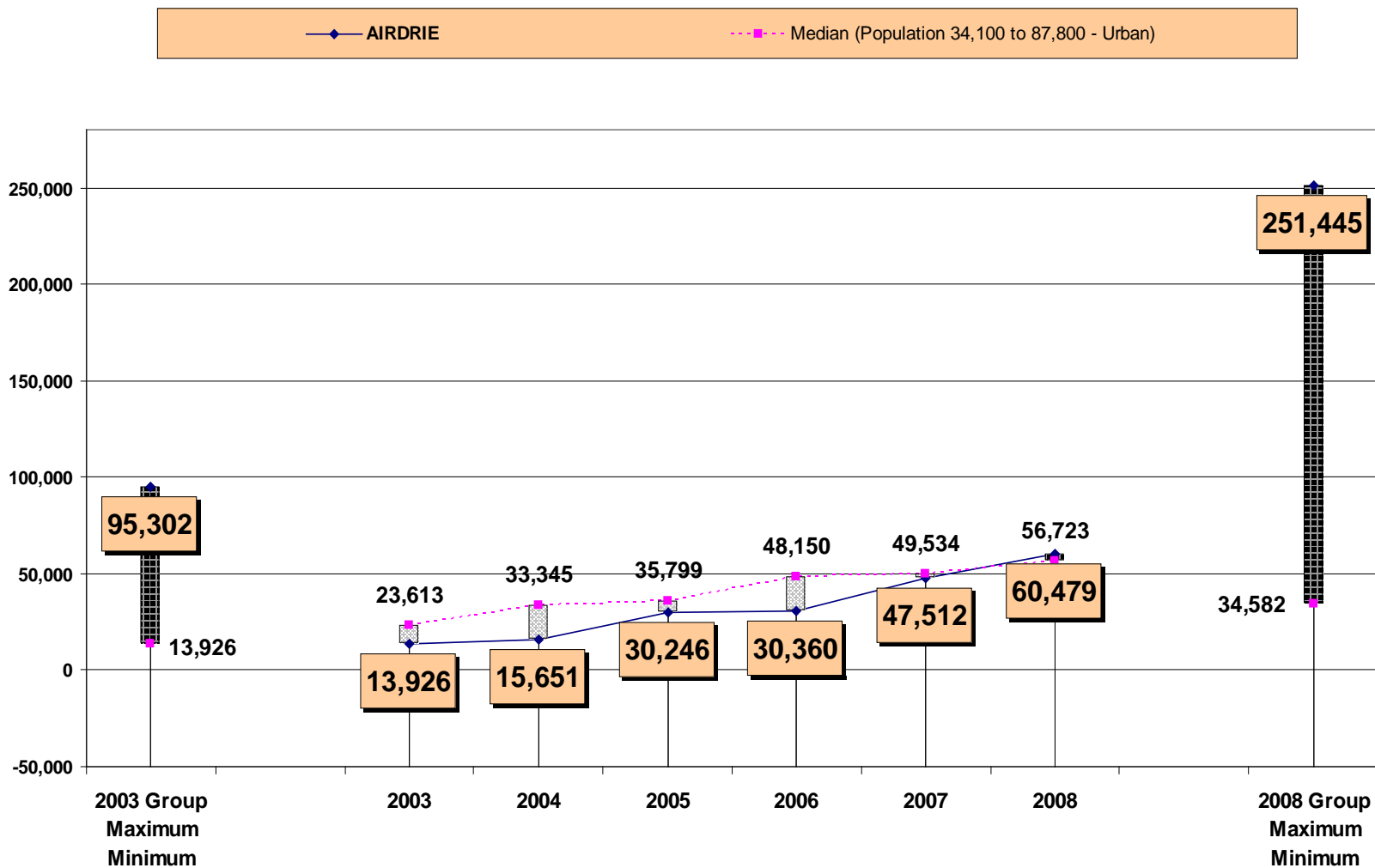
Note : Municipal, gas and electric functions are included where applicable.

Long Term Liquidity (in thousands)



Note : Long term liquidity equals all financial assets less liabilities. A positive result indicates the assets remaining if all liabilities were paid in full. A negative result indicates liabilities to be paid with future revenues. Gas and electric functions are included where applicable.

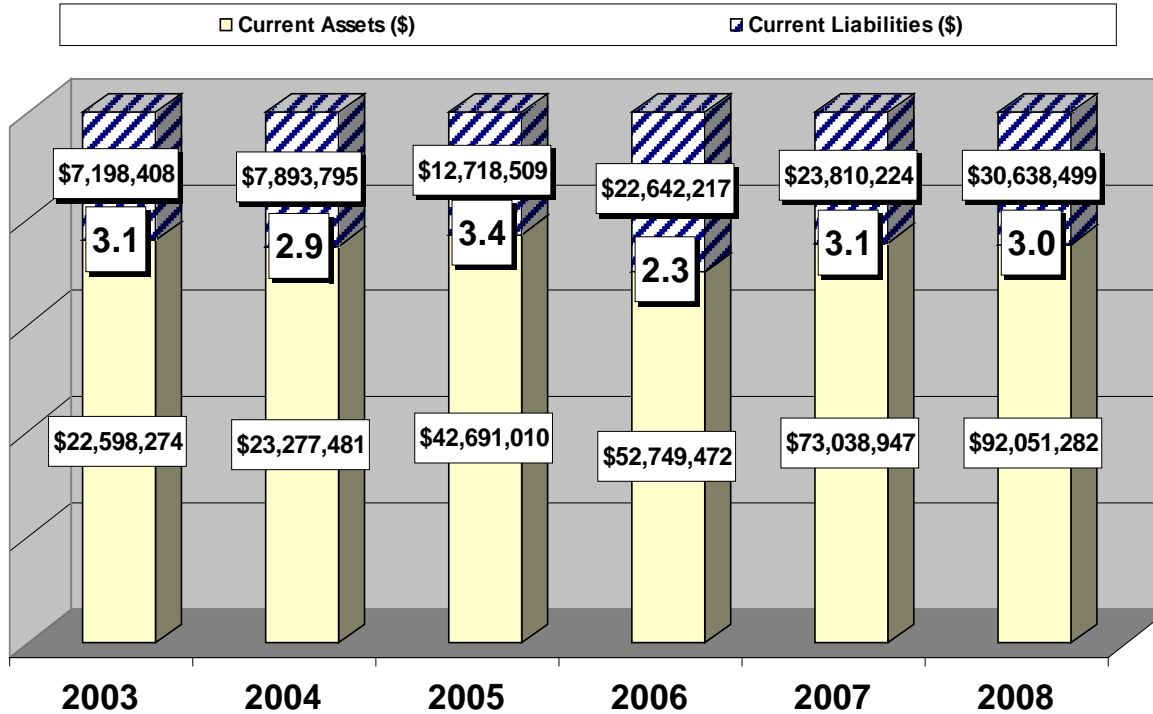
Total Reserves (in thousands)



Note : Municipal, gas and electricity functions are included where applicable.

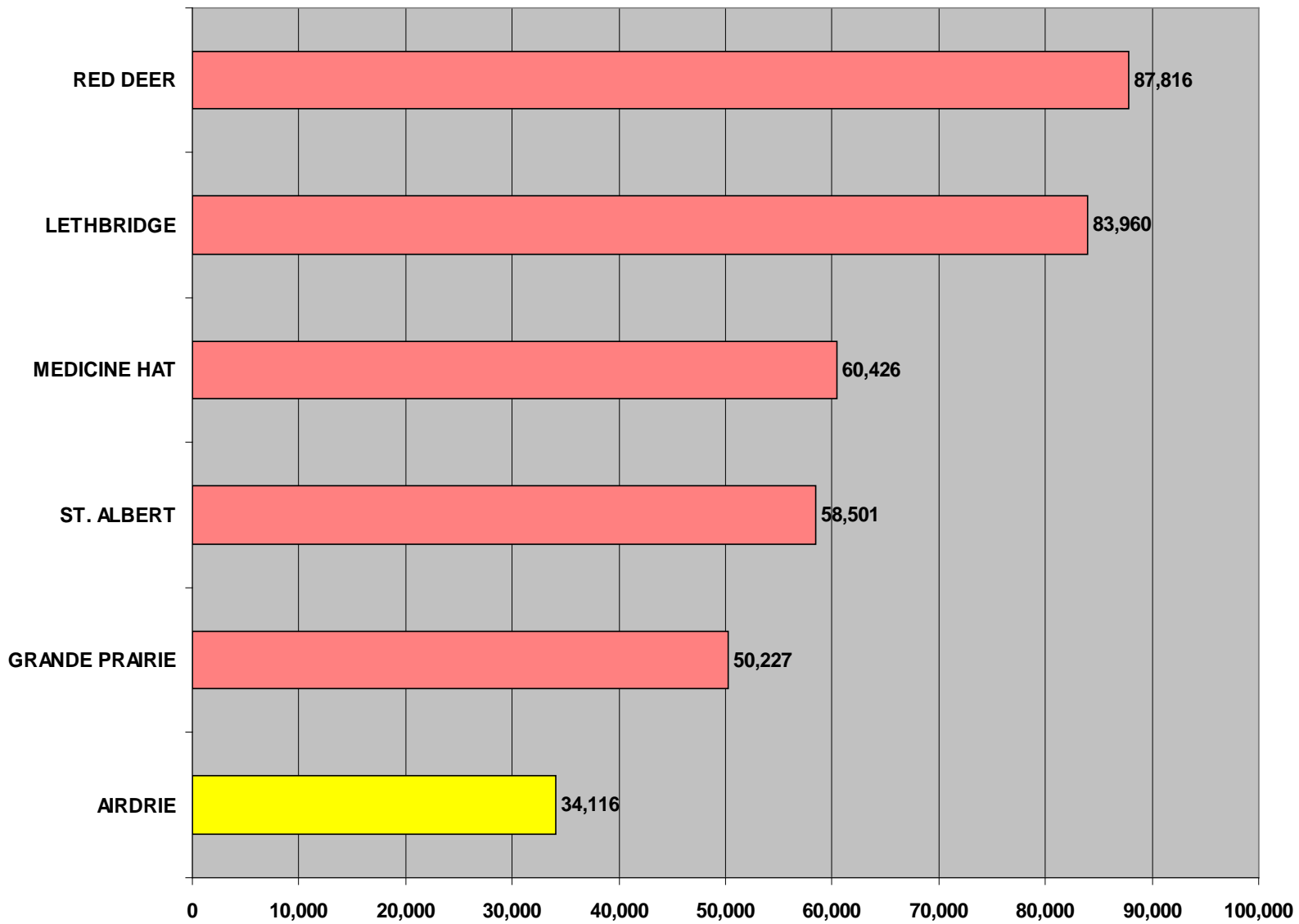
Ratio of Current Assets To Current Liabilities

AIRDRIE



Note: The current ratio calculation measures ability to meet short-term obligations with existing liquid assets. "Current Assets" are those which are liquid in nature (cash or an asset which can be easily converted to cash). Inventory is excluded from the calculation. "Current Liabilities" are generally obligations coming due within the next fiscal year. The ratio is shown in the centre of the column. A ratio greater than one indicates the degree to which current assets exceed current liabilities; a ratio smaller than one indicates the degree to which current liabilities exceed current assets. A zero (\$0) result at the top of a column indicates that the municipality had only current assets and no current liabilities. Gas and electrical functions are included where applicable.

Population



Equalized Assessment Per Capita

