



3.6%

population growth



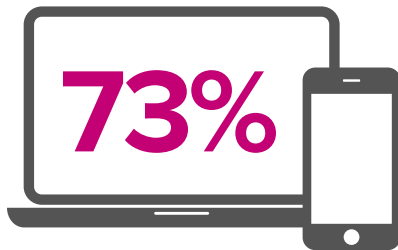
70,564

total population



2.7

average residents
per dwelling



73%

response rate for online
census submissions



98
SECONDS

was the average time it took
to complete the census online



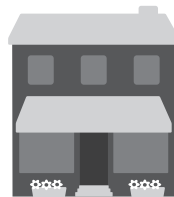
3,879

1979



11,424

1989



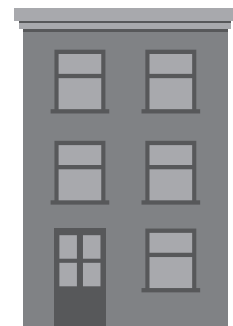
18,306

1999



38,091

2009



70,564

2019

POPULATION GROWTH OVER THE LAST 40 YEARS

Census 2019: Annual Indicators



26,210

total dwellings
in Airdrie



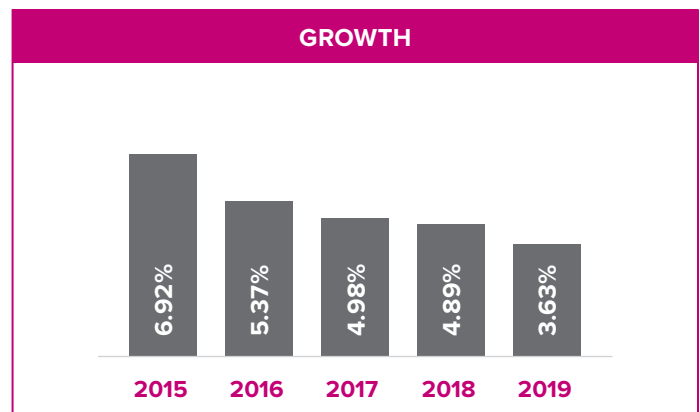
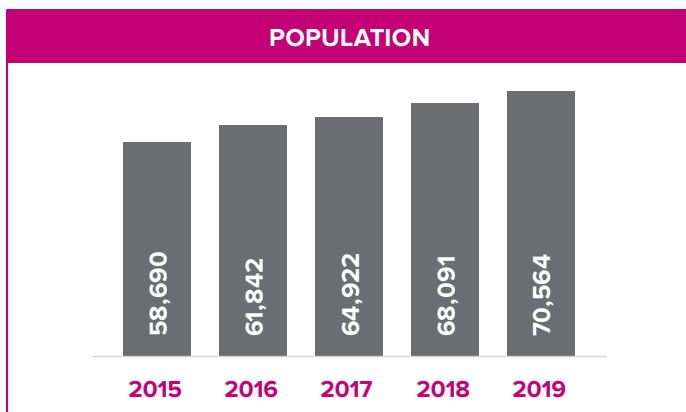
951

new homes added
between April 2018–2019



4,018

business licences
issued in 2018



**The primary purpose for conducting the census is to produce a total population count. It is a snapshot in time (April 1, 2019). The count provides the basis for calculating per capita grants for municipalities.*

YEAR END STATISTICS					
	2014	2015	2016	2017	2018
Housing permits (# of units)	1,500	1,419	1,010	981	701
Total residential sales	1,714	1,448	1,336	1,942	1,905
Residential average sale price	\$387,959	\$388,743	\$385,762	\$394,046	\$401,800
Residential building construction value	\$289M	\$298M	\$203M	\$216M	\$162M
Commercial/industrial permits	279	247	312	303	304
Commercial/industrial construction value	\$76M	\$71M	\$55M	\$28M	\$67M
Total business licences issued	3,325	3,584	3,699	3,944	4,018

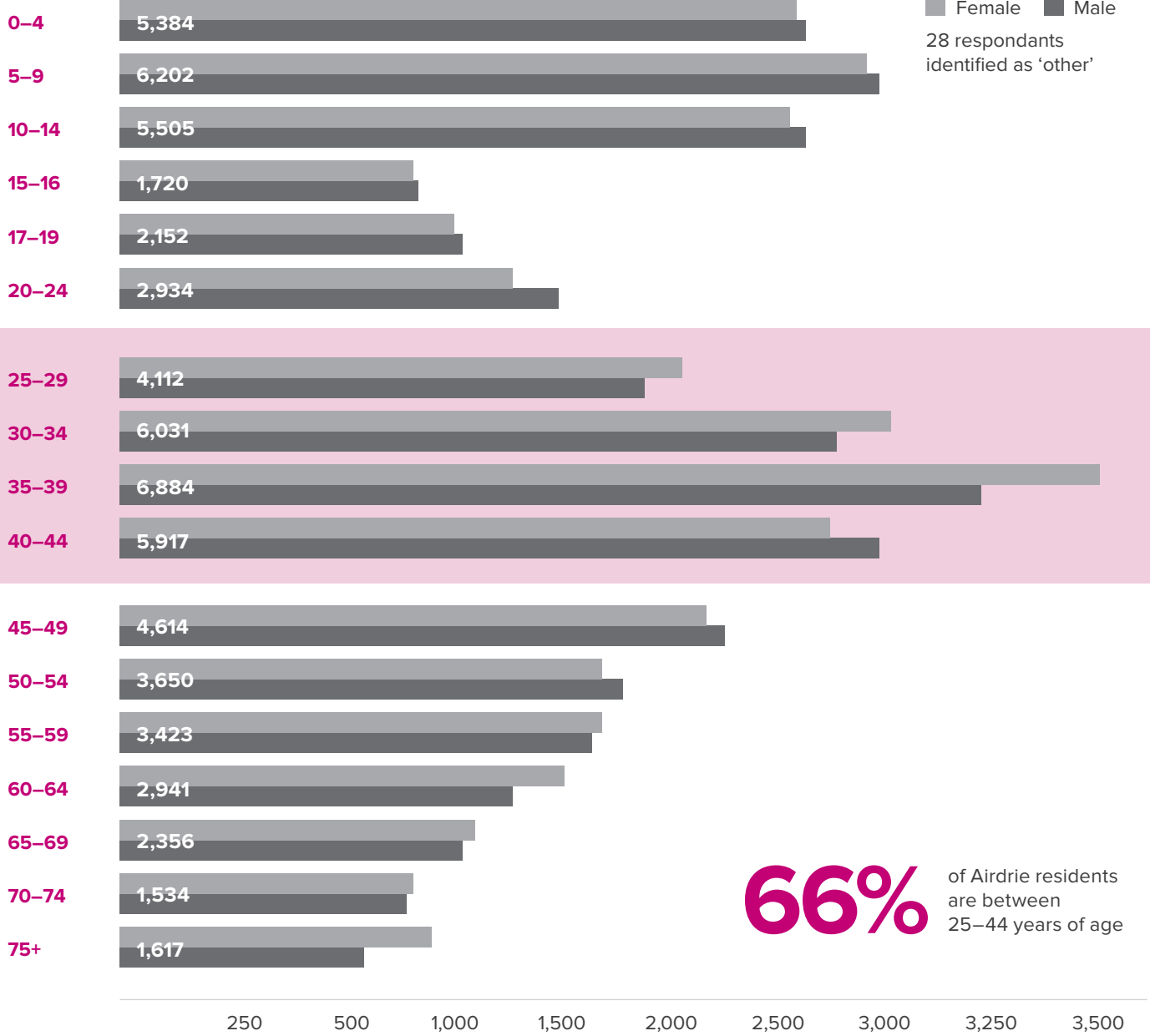
**Source: City of Airdrie Municipal Census results; City of Airdrie Assessment, Planning, Building Inspections and Business Licencing.*

Interested in learning more? Visit www.airdrie.ca/census

POPULATION BY AGE AND GENDER

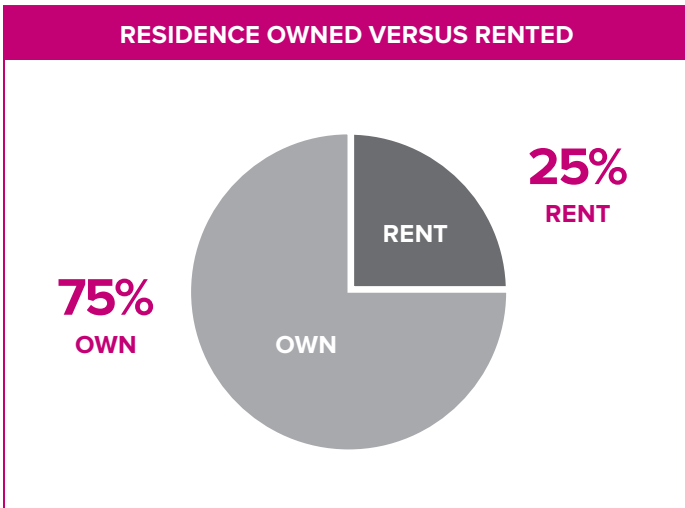
Total Population Count **70,564**

■ Female ■ Male
28 respondents identified as 'other'

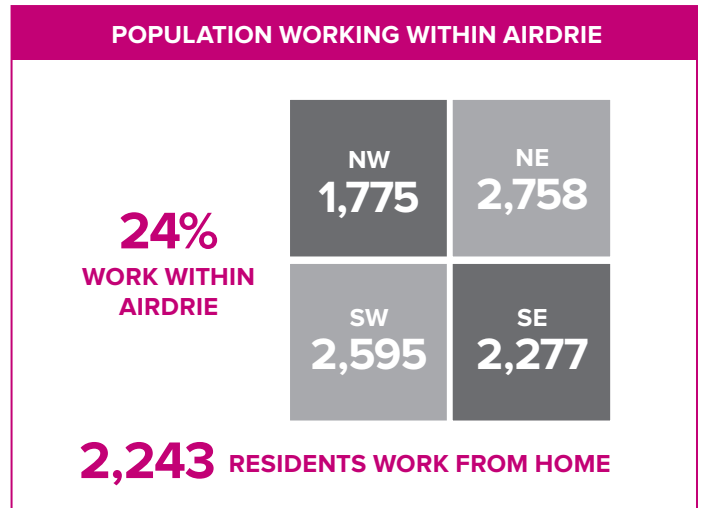


**Age breakdowns do not include 3,588 'prefer not to answer' responses. Information on age is needed to help the City of Airdrie plan for future needs including schools, recreation facilities, housing requirements and seniors' attractions; as well as to assess the community's changing needs. Gender-specific information helps to indicate demographic changes in our society and, when used with other characteristics, it is an important criterion in research and planning.*

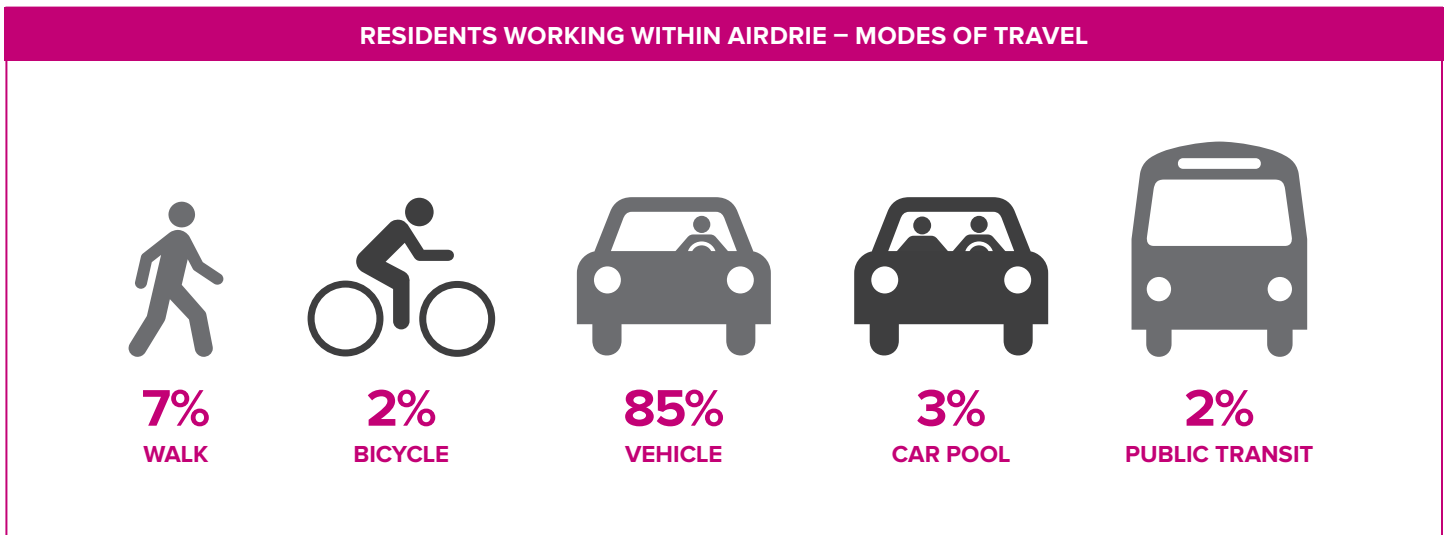
Census 2019: Housing and Transportation



**Residence owned versus rented statistics does not include 1,709 'prefer not to answer' responses. The trend in owned and rented accommodation is identified and measured to assist in planning future housing needs.*



**Population by quadrant statistics does not include 992 'prefer not to answer' or 'no' responses. This information is needed to assist in the future planning of the transportation networks within the city.*



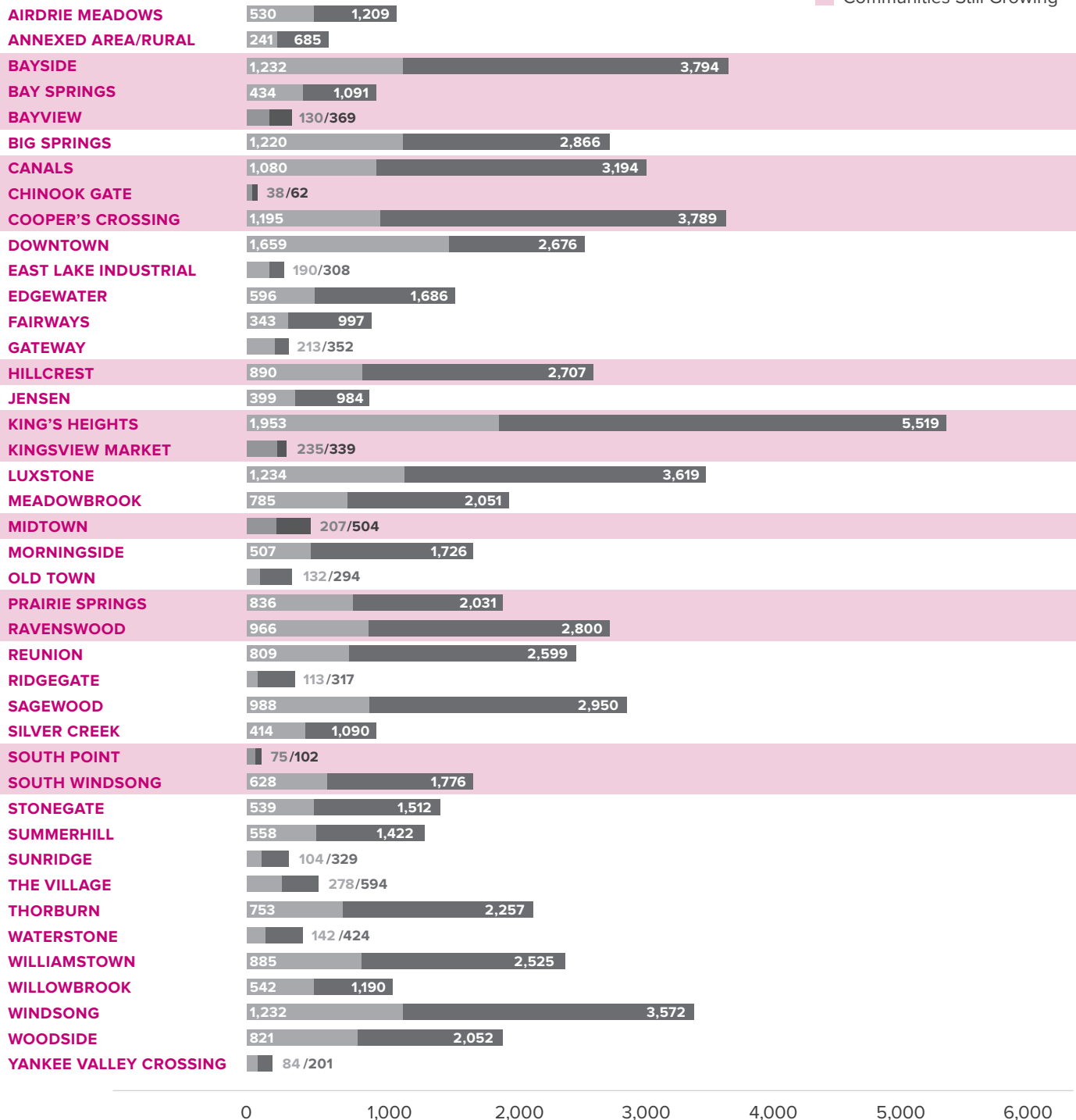
Working within Airdrie – modes of travel – total respondents 10,397 (does not include 3,372 'prefer not to answer', 'work from home' or 'not applicable' responses.) This information was gathered to assist in the future planning of the transportation networks within the City.

Census 2019: Communities

POPULATION AND DWELLING COUNT BY COMMUNITY

Total Dwelling Count **26,210** Total Population Count **70,564**

Dwellings
 Population
 Communities Still Growing



Interested in learning more? Visit www.airdrie.ca/census